



# COUNTY OF ORANGE OFFICE OF CARE COORDINATION

SATURDAY, MARCH 8, 2025



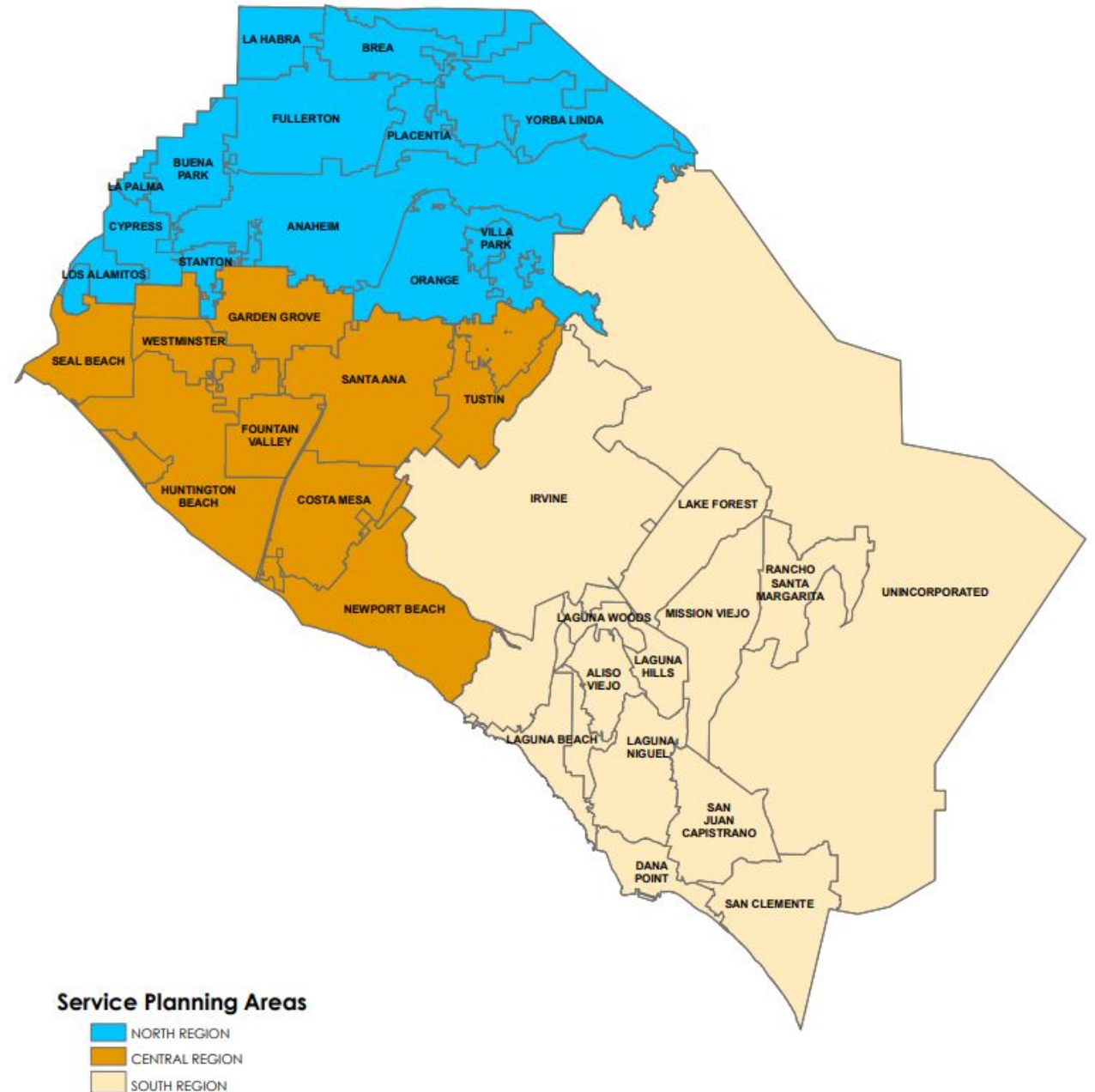
---

# OFFICE OF CARE COORDINATION

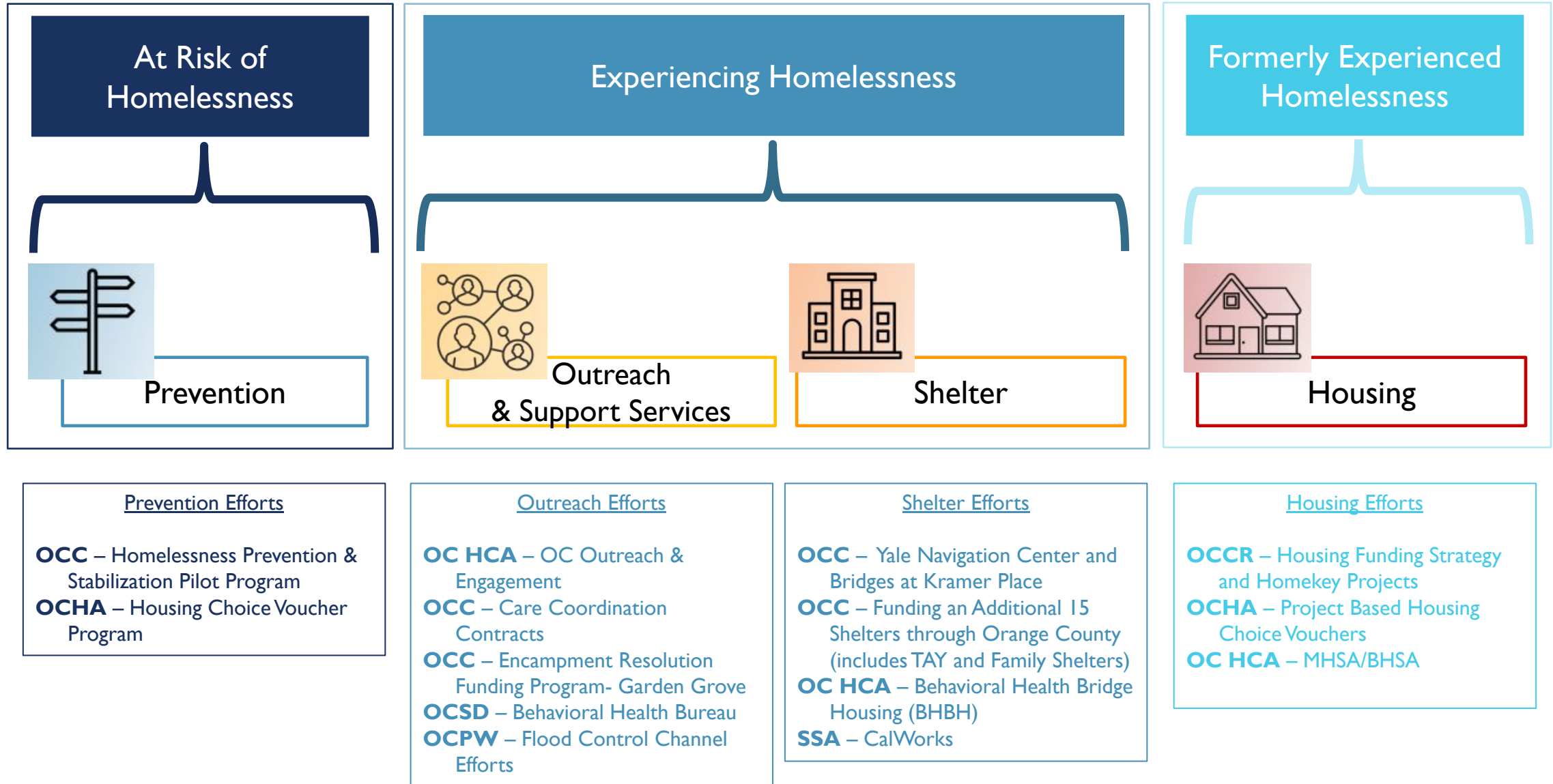
- The Office of Care Coordination engages across Orange County, working with cities and community-based organizations to strengthen regional capacity and multi-city, multi-sector investments to prevent and address homelessness.
- The Office of Care Coordination is comprised of four components:
  - Shelter System
  - Continuum of Care
  - Care Coordination
  - Special Projects

# SERVICE PLANNING AREAS

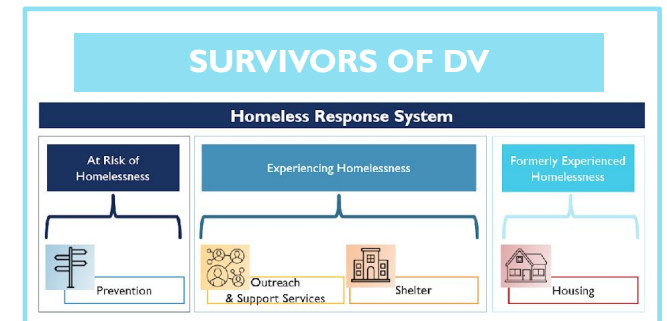
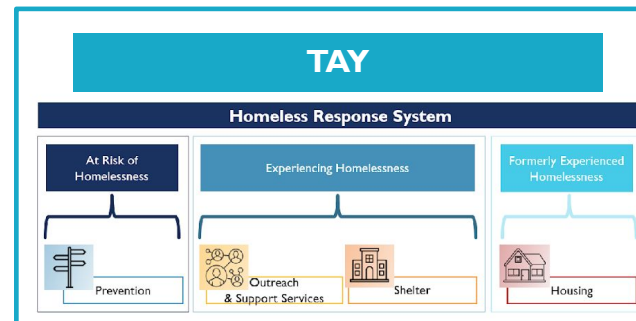
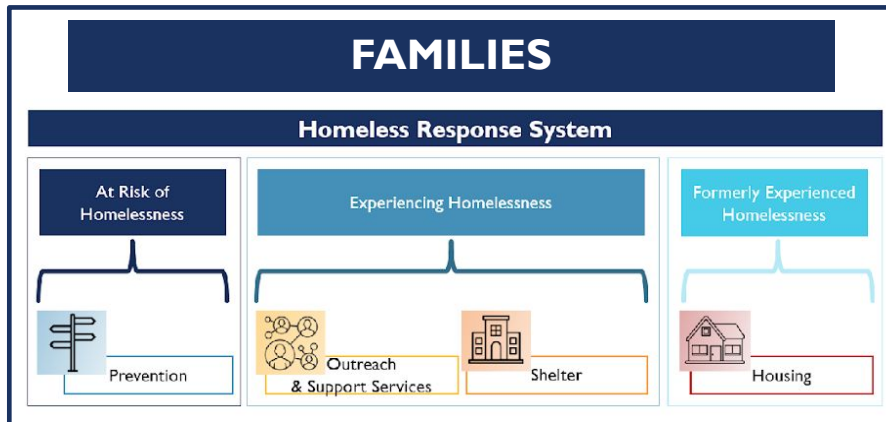
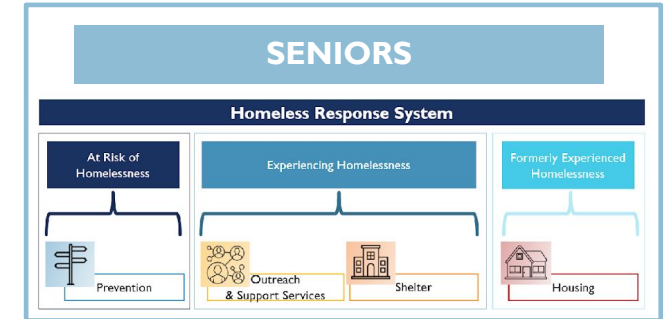
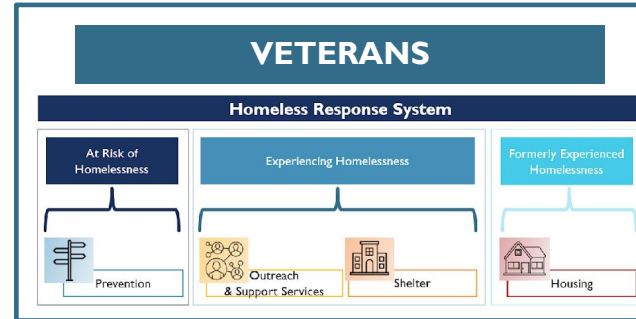
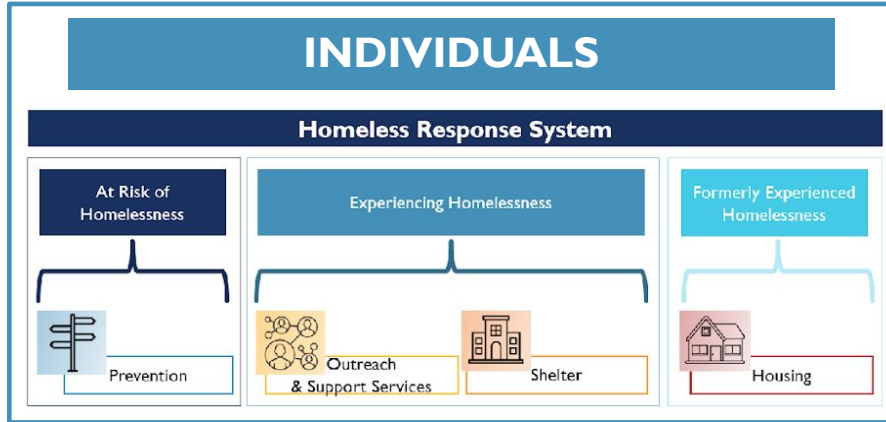
- Promote regional coordination and solutions
- Consideration for the different landscape, including geography, transportation, and service and resources availability



# Homeless Response System



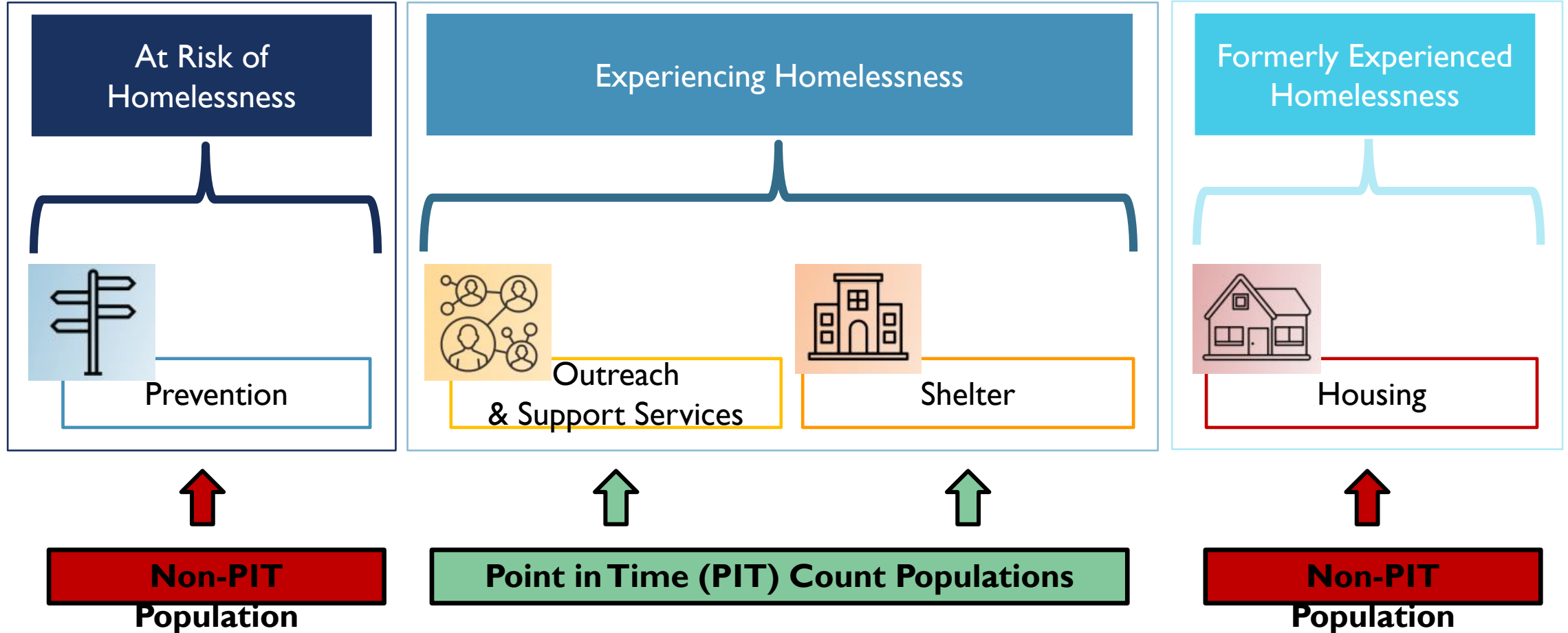
# Homeless Response System - Sub Populations



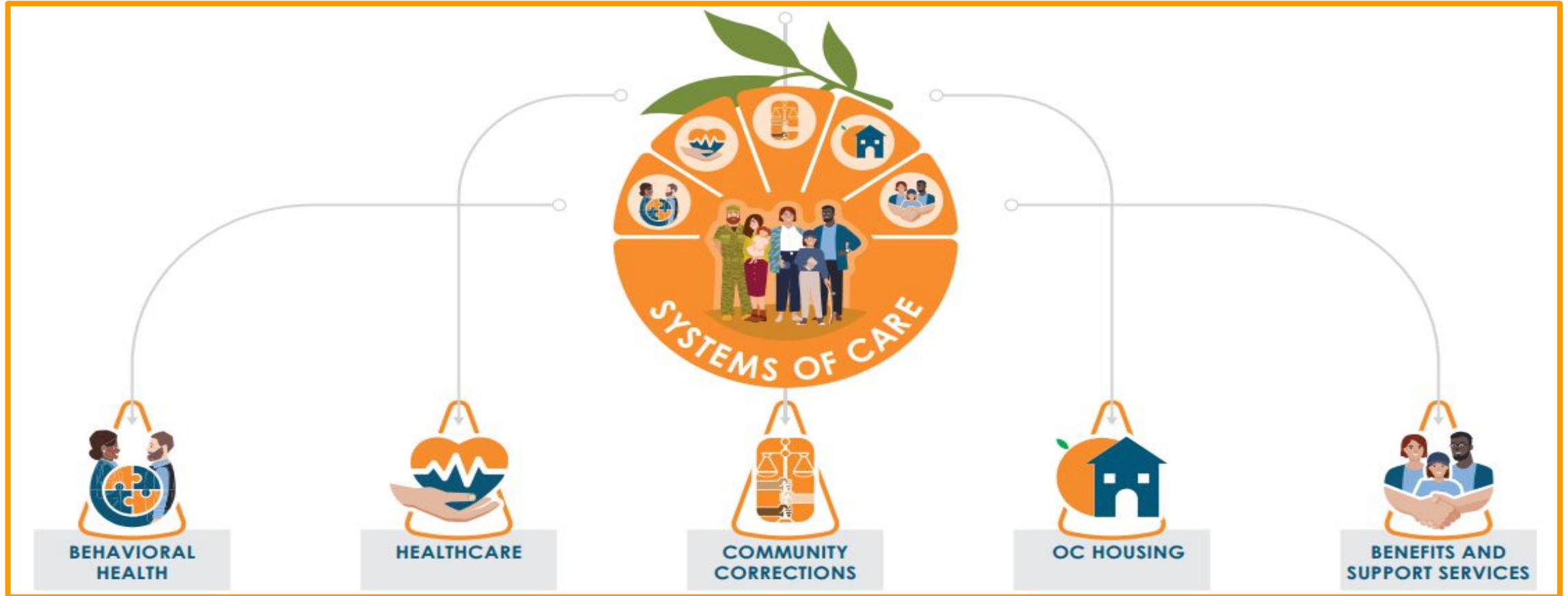
## Definitions

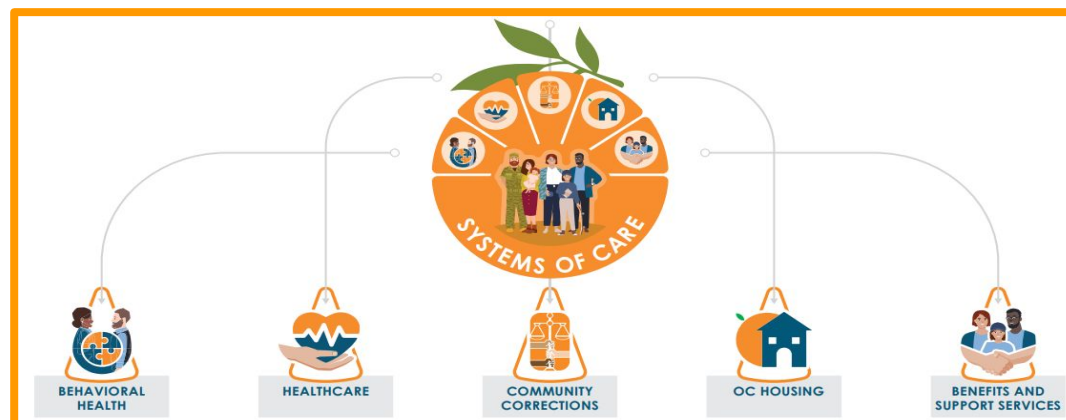
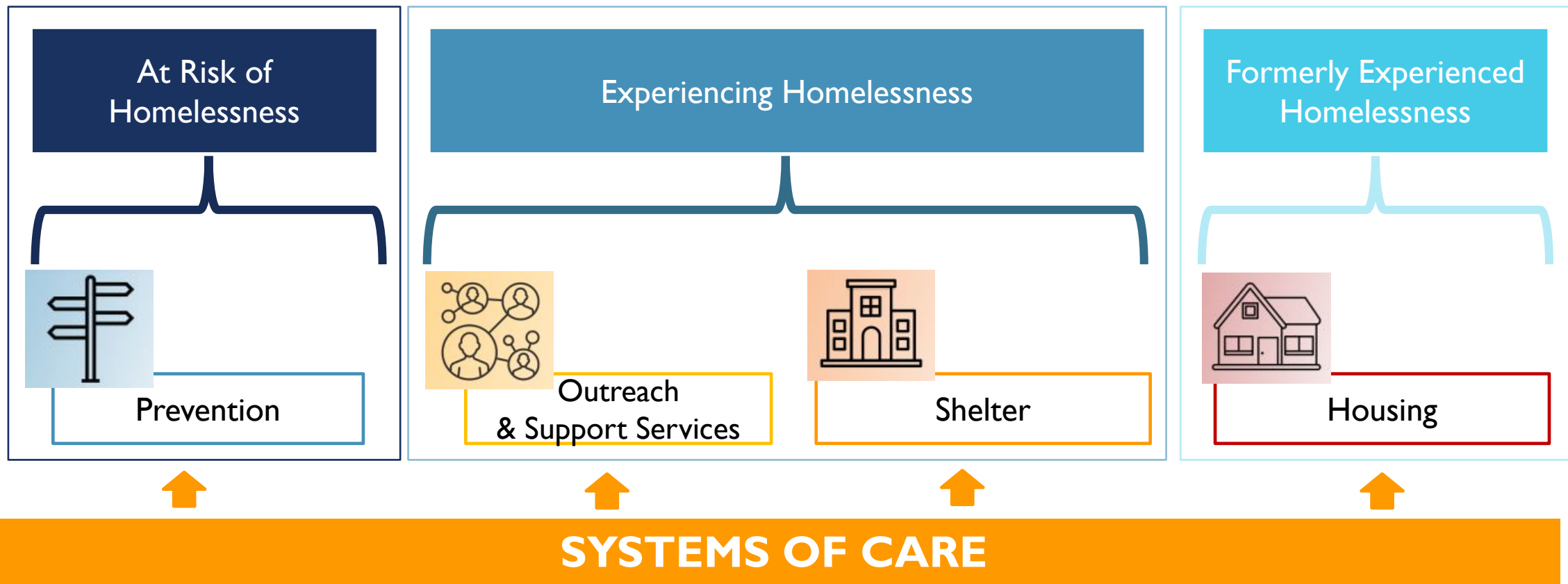
- Individuals – Households with only adults ages 18 and older
- Families – Households with at least one adult 18 and older and one child 17 or younger
- Veterans – Persons who served in the U.S. Armed Forces, National Guard or Reserves
- Seniors – Persons ages 62 and older
- Transitional Aged Youth (TAY) – Persons Ages 18 to 24
- Survivors of Domestic Violence (DV) – Households who are fleeing or attempting to flee domestic violence

# Homeless Response System



# SYSTEMS OF CARE



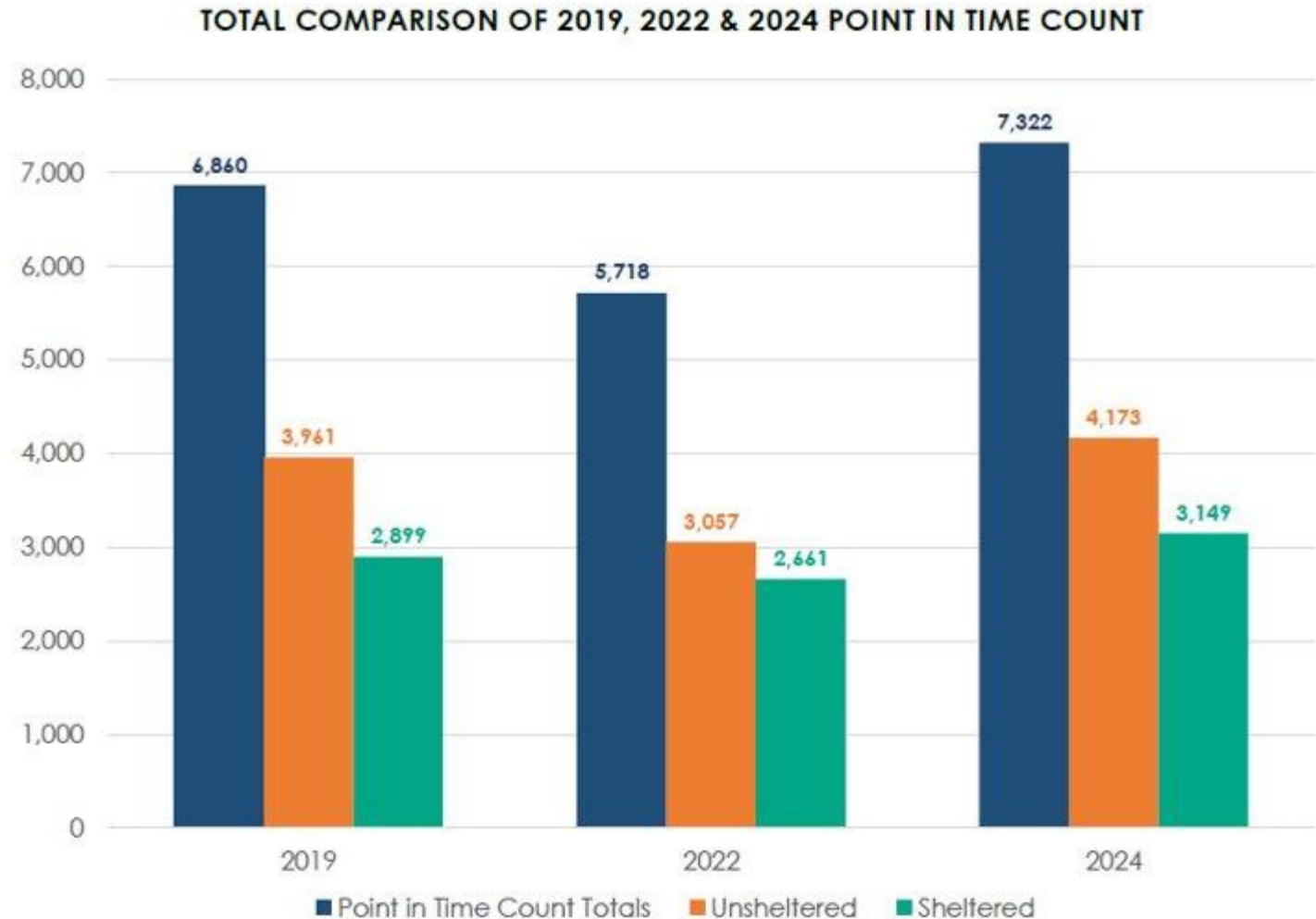




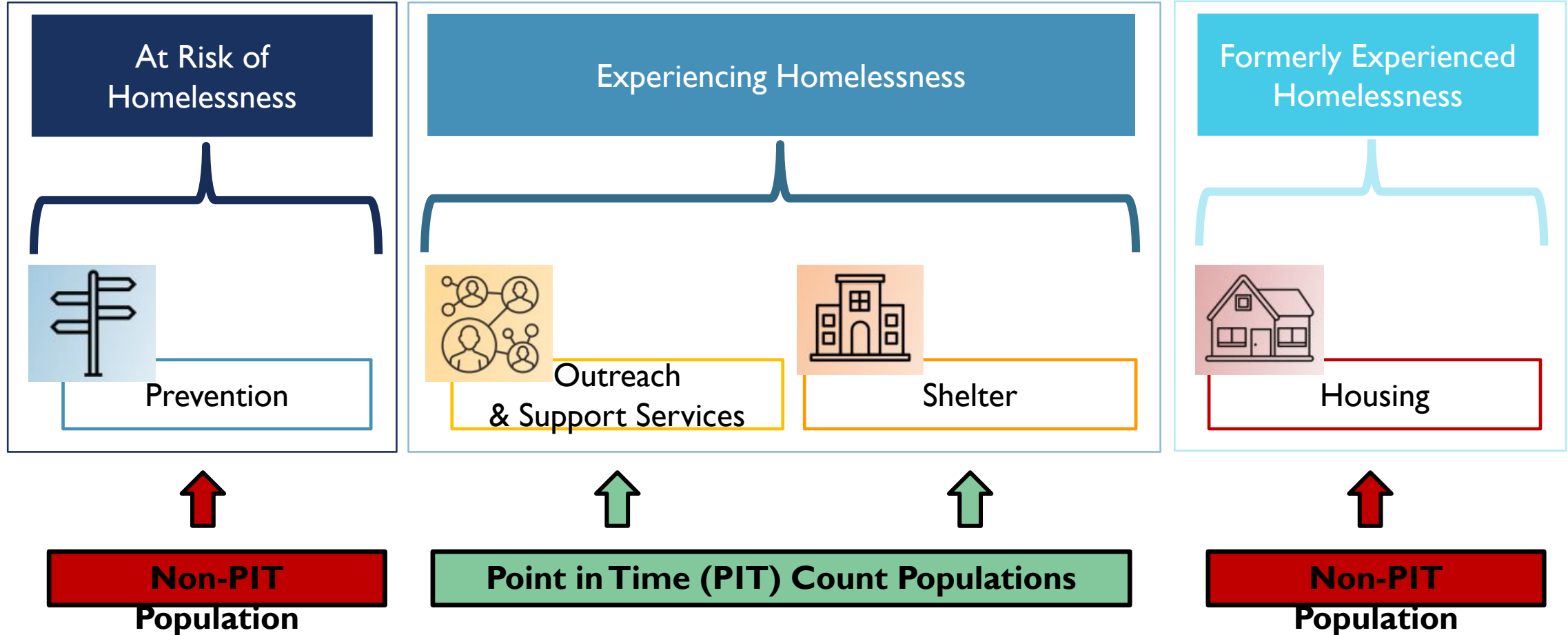
# POINT IN TIME COUNT



**7,322** represents a  
**28%** increase from 2022 and  
**7%** increase from 2019



# Homeless Response System



## 2024 HOUSEHOLD STATUS

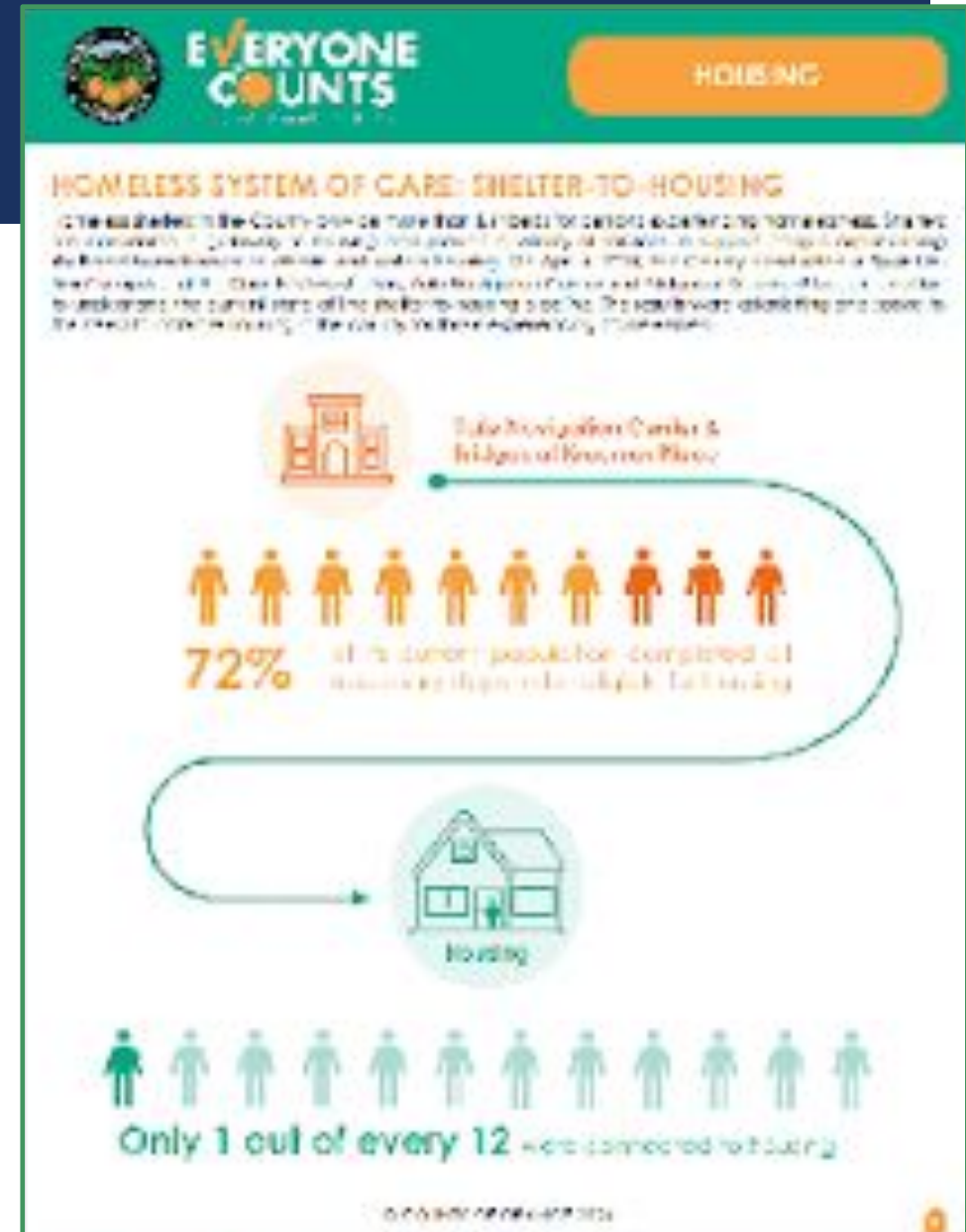
Population	Description	Unsheltered (3,803) Households	Sheltered (2,456) Households	Total (6,259) Households
Individuals	Households with only adults 18 and older	3,747 Households 3,993 Persons	2,159 households 2,195 Persons	5,906 Households 6,188 Persons
Families	Households with at least one adult 18 and older and one child 17 or younger	56 Families 180 persons in households: 81 Adults 99 Children	291 Families 948 persons in households: 362 Adults 586 Children	347 Families 1128 persons in households: 443 Adults 685 Children
Unaccompanied Minors	Minors, 17 and younger not accompanied by an adult	0	6 households and 6 persons	6 households and 6 persons

POINT IN  
TIME COUNT

# UNDERSTANDING PIT COUNT RESULTS

## Factors Contributing to a Point In Time Count Increase:

- More people became homeless since 2022 than exited out of homelessness.
- There are more people in the Homeless Response System than permanent, affordable housing for them to live in.
- The Housing available, including Housing recently built by the County, is being fully utilized and has Ended Homelessness for many, but more people have fallen into homelessness.

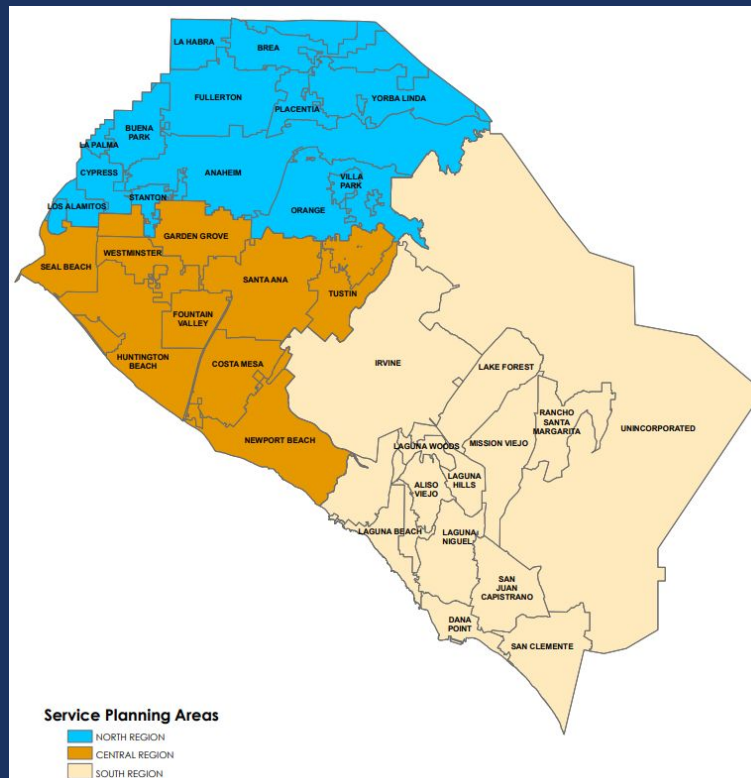


# FAMILY SOLUTIONS COLLABORATIVE

The Family Solutions Collaborative takes the lead in ending family homelessness through effective collaboration, advocacy, and innovative solutions.

FSC functions as the “System” for families supporting over 30 direct service providers.

# ACCESS POINTS FOR FAMILIES



Open Access Points are defined as entry points in the Orange County Family Coordinated Entry System (FCES) that offer access to prevention, diversion and housing service navigation services.

## **North SPA:**

City of La Habra  
Homeless Intervention Services OC (HIS OC)  
Illumination Foundation  
Pathways of Hope

## **Central SPA:**

City of Costa Mesa  
City of Westminster  
Families Forward – Santa Ana Office  
Serving People in Need (SPIN)

## **South SPA:**

Family Assistance Ministries (FAM)  
Families Forward – Irvine Office  
South County Outreach

## HOW TO ACCESS SERVICES

---

<https://www.familysolutionscollaborative.org/help/>

Call 2-1-1

---

Families will be screened for eligible and available services.

---

Access Points are not emergency services.



Karen Betances, LMSW

Shelter Programs Manager

[Karen.betances@ocgov.com](mailto:Karen.betances@ocgov.com)

714-834-2184