

Virtual Chapter Chat COVID-19 Updates

**Wednesday, April 22, 2020
6:00 – 7:00 PM**

Call-In: (786) 535-3211
Access Code: 625-223-293
(Please ensure you are on mute)

American Academy of Pediatrics
DEDICATED TO THE HEALTH OF ALL CHILDREN™
ORANGE COUNTY CHAPTER



Welcome

Kate Williamson, MD
President, AAP-OC Chapter



Eric Ball, MD
Immediate Past President, AAP-OC Chapter

(Please ensure you are on mute)

AAP-OC Chapter Chat - Housekeeping

- Callers will be muted upon entering the call and will remain muted during the chat
- Use the chat box to submit comments or questions
- If you are on the phone for audio, please make sure your sound is off on your computer (this causes feedback)
- Do not put your phone on hold if you have to leave the meeting (we will hear the hold music)
- This webinar will be recorded and posted on the AAP-OC Chapter website



2019 Novel Coronavirus Update

Matt Zahn, MD

Medical Director

Communicable Disease Control Division

Orange County Health Care Agency

April 22, 2020



Cumulative Cases to Date

1,691

(includes deaths)

Cumulative Deaths to Date

33

Cases Reported Today

29

Deaths Reported Today

0

Cases Currently Hospitalized

148*

** Includes ICU cases*

Cases Currently in ICU

54

ICU - Intensive Care Units

Numbers fluctuate day-by-day due to changes in patient condition(s). Data are gathered daily at one point in time.

Novel Coronavirus in Los Angeles County*

16,435

Cases**

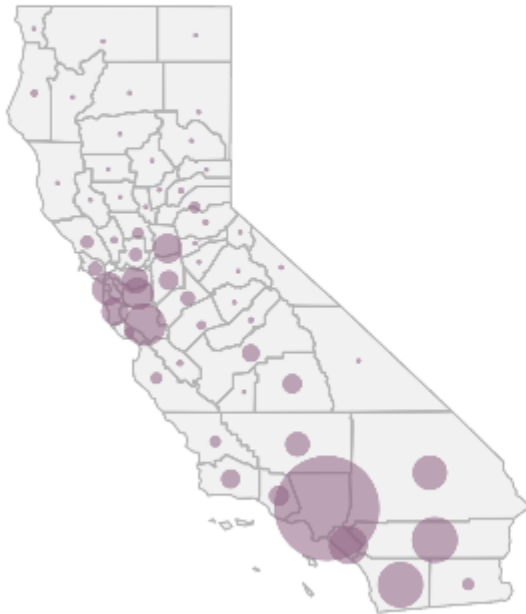
729

Deaths

California COVID-19 By The Numbers

April 21, 2020

Numbers as of April 20, 2020



For county-level data:
data.chhs.ca.gov

CALIFORNIA COVID-19 SPREAD

33,261

Total Cases

Ages of Confirmed Cases

- 0-17: 683
- 18-49: 15,901
- 50-64: 8,961
- 65+: 7,650
- Unknown/Missing: 66

Gender of Confirmed Cases

- Female: 16,363
- Male: 16,641
- Unknown/Missing: 257

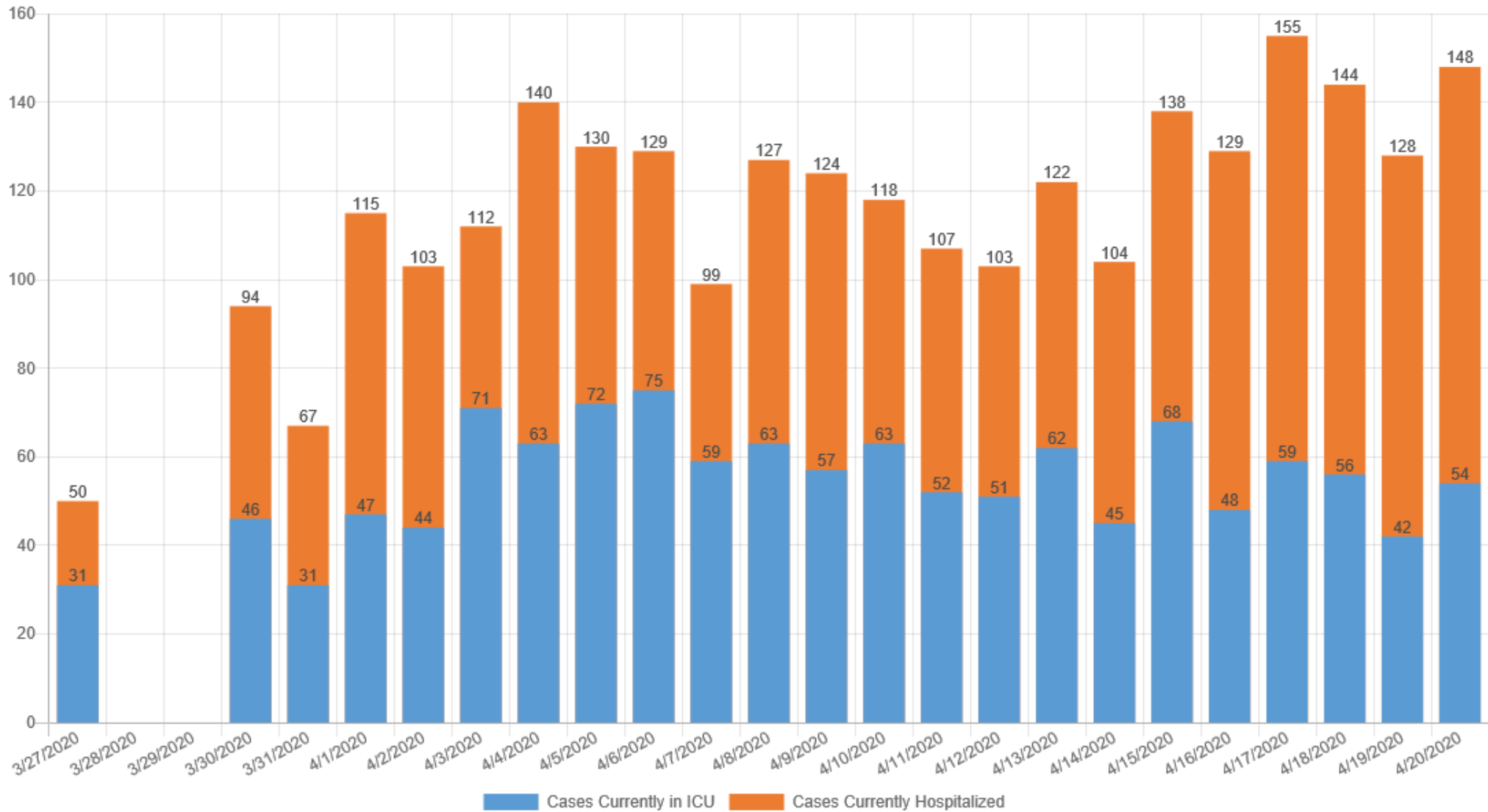
Hospitalizations

Confirmed COVID-19
3,365/1,241
Hospitalized/in ICU

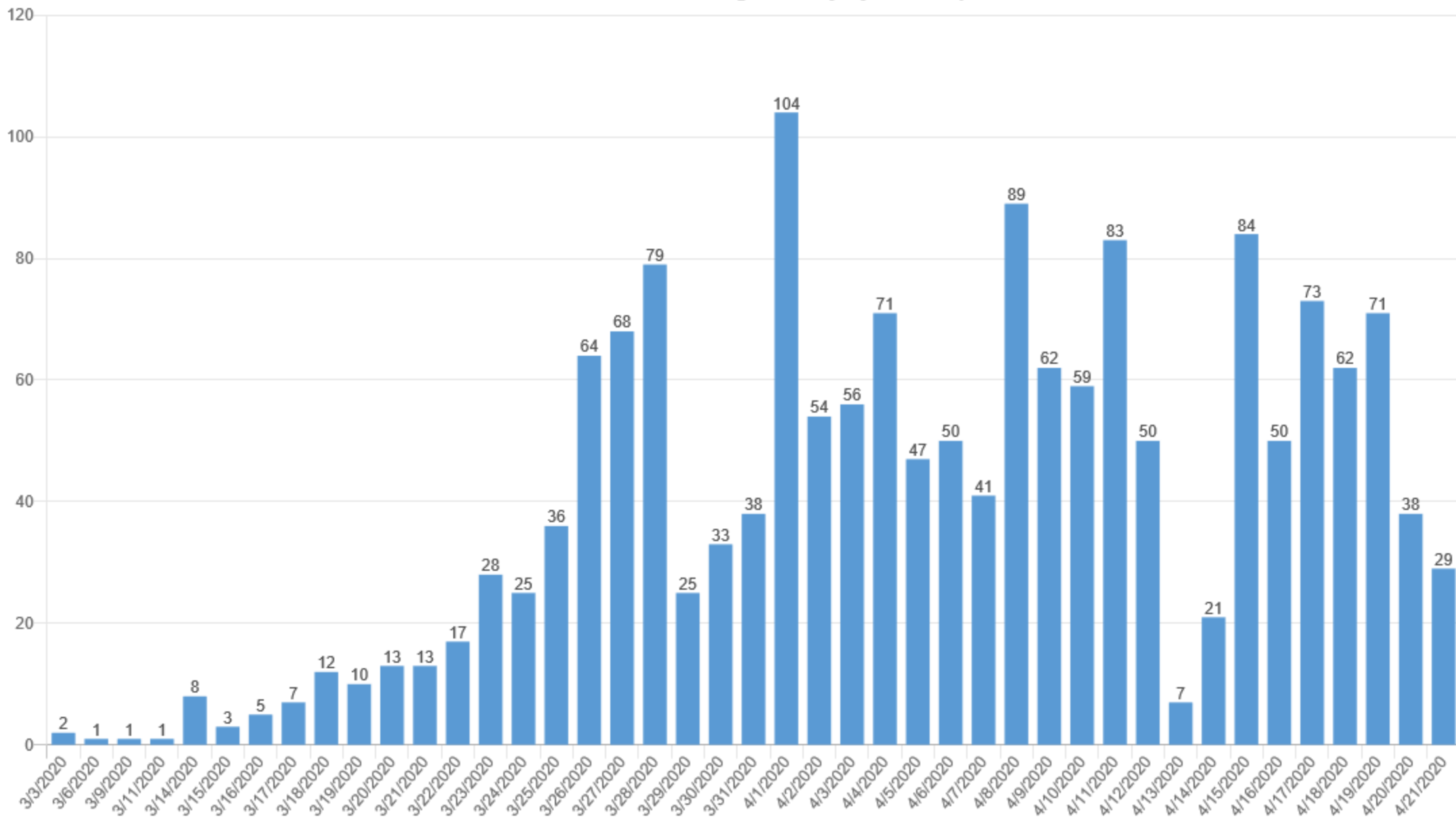
Suspected COVID-19
1,521/261
Hospitalized/in ICU

1,268
Fatalities

COVID-19 Cases Hospitalized in Orange County by Date Reported



New COVID-19 Cases in Orange County by Date Reported



Skilled Nursing Facility Outbreaks Are a Serious Concern

- Of 1224 Skilled Nursing Facilities in California, 258 have reported having one or more COVID-19 case by either a resident or a health care worker
- Orange County has begun to see clusters in SNFs in the last two weeks
- Aggressive screening and testing is being implemented in OC and throughout California

CDC Testing Recommendations

PRIORITY 1

Ensure optimal care options for all hospitalized patients, lessen the risk of nosocomial infections, and maintain the integrity of the healthcare system

- Hospitalized patients
- Symptomatic healthcare workers

PRIORITY 2

Ensure that those who are at highest risk of complication of infection are rapidly identified and appropriately triaged

- Patients in long-term care facilities with symptoms
- Patients 65 years of age and older with symptoms
- Patients with underlying conditions with symptoms
- First responders with symptoms

PRIORITY 3

As resources allow, test individuals in the surrounding community of rapidly increasing hospital cases to decrease community spread, and ensure health of essential workers

- Critical infrastructure workers with symptoms
- Individuals who do not meet any of the above categories with symptoms
- Health care workers and first responders
- Individuals with mild symptoms in communities experiencing high COVID-19 hospitalizations

NON-PRIORITY

- Individuals without symptoms

Testing Recommendations

- NP PCR swab remains the test of choice for most patients
 - BUT sensitivity estimates are 75-80% (though data is quite limited)
 - PCR of sputum, tracheal aspirate, or BAL specimens all can add sensitivity
 - For cases strongly suggestive of disease, consider treating as COVID-19 even if testing is negative
- PCR testing of asymptomatic persons is still being assessed by public health
 - Recommended by CDPH: asymptomatic patients prior to entering nursing homes
 - Often being used: SNF residents (and staff) during outbreaks
 - Maybe indicated: correctional settings and homeless

Public Health Response when Social Distancing Restrictions are Eased

- OCHCA has designated a large number of staff to perform contact tracing
 - Advising case about isolation procedures
 - Following close (household) contacts
 - Assuring healthcare facilities are aware of potential exposures
 - Informing work sites, schools, other sites where persons may have had significant contact (within 6 feet for more than 10 minutes)

Testing Remains a Limitation

- In order to effectively contact trace, we need to have adequate testing
- Mindset and capacity will need to be established for people to consistently GET TESTED
- PCR sensitivity is a potential issue

LOCATION	ADDRESS	SCHEDULE	TELEPHONE
AltaMed-Anaheim	1325 N. Anaheim Blvd. Anaheim 92801	Monday - Sunday 9:00 a.m. - 3:00 p.m.	Call (888) 499-9303 for an appointment.
AltaMed-Santa Ana Bristol	2720 S Bristol St. #104 Santa Ana 92704	Monday - Saturday 9:00 a.m. - 3:00 p.m.	Call (888) 499-9303 for an appointment.
Nhan Hoa Comprehensive Health Care Clinic	7761 Garden Grove Blvd. Garden Grove 92843	Monday - Friday 9:30 a.m. - 4:30 p.m.	Registration is REQUIRED on our website at www.nhanhoa.org . Call (714) 898-8888 with questions.
UCI Health	Call for Site Locations	Call for Site Details	Call (714) 456-7002 for COVID-19 screening and appointment.

Antibody Testing & Vaccines

Unintended Consequences of Physical Distancing

Jasjit Singh, MD

Pediatric Infectious Disease Specialist, CHOC Children's





Jasjit Singh, MD

*Pediatric Infectious Disease Specialist,
CHOC Children's*

AAP Chapter 4 Chat

Serology

- > 90 tests
- Different sensitivity and specificity
- Kinetics IqM/IqG response
- Different targets
- Neutralizing antibodies
- Role T-cell immunity



COVID-19 Antibody Testing

Santa Clara COVID-19 Antibody Seroprevalence Study

- 2.8% population-weighted prevalence
- 2.49% - 4.16% prevalence range
- 50- to 80-fold more than the number of confirmed cases (956)



Los Angeles COVID-19 Preliminary Antibody Testing Results

- 4.1% population-weighted prevalence
- 2.8% - 5.6% prevalence range
- 28- to 55-fold more than the number of confirmed cases (7,994)



COVID-19 Treatment and Vaccine

Treatment

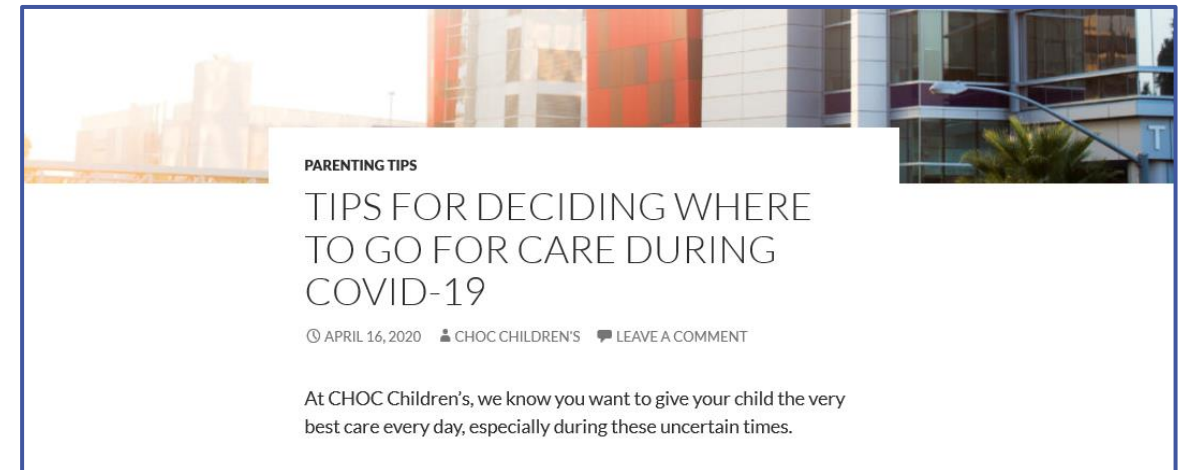
- Hydroxychloroquine
- Azithromycin
- Tocilizumab
- Convalescent sera

Vaccine

- Targets
- Progress

Unintended Consequences of Physical Distancing: *Medical Avoidance*

- Unfavorable care outcomes and economic impact
- Essential vs. Nonessential
 - Vaccines!
- Community messaging is key



Looking forward...

- Subsequent waves of COVID
- What happens when they coincide with other winter respiratory viruses?
- Influenza will use many of the same medical resources (beds, ICU beds, ventilators), especially for the elderly
- Overlap in symptoms, more testing
- **Getting high rates of flu vaccine will be of paramount importance!**
- When we do have a COVID vaccine, how do we get everyone immunized?



THANK YOU

Next Steps: Relaxing Physical Distancing

Matt Zahn, MD & Jasjit Singh, MD





Telehealth Triage: How to Use Telehealth During COVID-19

Time: Thursday, April 23, 2020 at 1 pm PT/4 pm ET

Please join the California Telehealth Policy Coalition for a webinar on telehealth basics and how it can be used for triage and treatment during COVID-19. Attendees will better understand what telehealth is, how it can be used to meet provider and patient needs during COVID-19, and what opportunities for action exist right now.

Moderators and speakers to include:

- Julie Bates, MS, Gerontologist, Associate State Director, AARP of California
- Misty Humphries, MD, MAS, Associate Professor, Department of Surgery, UC Davis Health
- Sean Johnson, MHA, BSN, RN, VP, Applications and Analytics, Sansum Clinic
- **Katherine Williamson, MD, Pediatrician Children's Hospital of Orange County**

Registration Link - https://zoom.us/webinar/register/WN_plbQXTaLRwyDpeW0uA9oyA

SAVE THE DATE

- Save the Date! Next AAP-OC Chapter Chat:
 - ▶ Wednesday, April 28, 2020
6:00pm – 7:00pm
 - ▶ Email and registration to be sent out soon.



Thank You.

Thank you for participating!

