

# Thank You for Joining Us!

The presentation will begin shortly. All participants are muted and video cameras are disabled for the duration of the presentation. If you would like to ask a question, please use the Q&A feature.



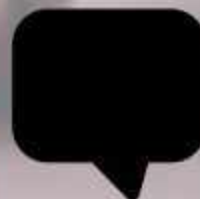
**Ensure your surroundings are quiet. If not, consider headphones with a microphone.**



**Video cameras for all participants will be disabled except for speakers or presenters.**



**Please mute yourself upon joining. To minimize distractions, please stay on mute throughout the meeting.**



**Use the Chat feature to ask questions and post comments. Type out your message and hit "Enter" to send.**

American Academy of Pediatrics

DEDICATED TO THE HEALTH OF ALL CHILDREN™



Orange County Chapter

# AAP-OC Chapter Chat

## Return to School Update

Wednesday, September 16, 2020  
6:30 – 7:30 PM



# Welcome

Kate Williamson, MD  
*President, AAP-OC Chapter*





# Thank You for Joining Us!

The presentation will begin shortly. All participants are muted and video cameras are disabled for the duration of the presentation. If you would like to ask a question, please use the Q&A feature.



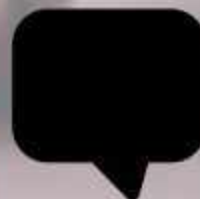
**Ensure your surroundings are quiet. If not, consider headphones with a microphone.**



**Video cameras for all participants will be disabled except for speakers or presenters.**



**Please mute yourself upon joining. To minimize distractions, please stay on mute throughout the meeting.**



**Use the Chat feature to ask questions and post comments. Type out your message and hit "Enter" to send.**

American Academy of Pediatrics

DEDICATED TO THE HEALTH OF ALL CHILDREN™



Orange County Chapter

# Dr. Paul Qaqundah

## AAP-OC President 1985-1987

"Don't let these changing and challenging times in medicine stop you from doing your best for children and their families. Medicine never changes; people will always get sick and need their physician to take care of them.

What changed is who pays the bill. Get involved with your local and national AAP and always be advocates for children, their families and yourselves. It is an honor to work and help children and their families."



# COVID Numbers & School Reopening in Orange County

David Núñez, MD, MPH, FAAP  
Medical Director, Community & Nursing Services  
HCA COVID Schools Response Team  
Public Health Services, OCHCA



# CDPH Tier Framework Metrics

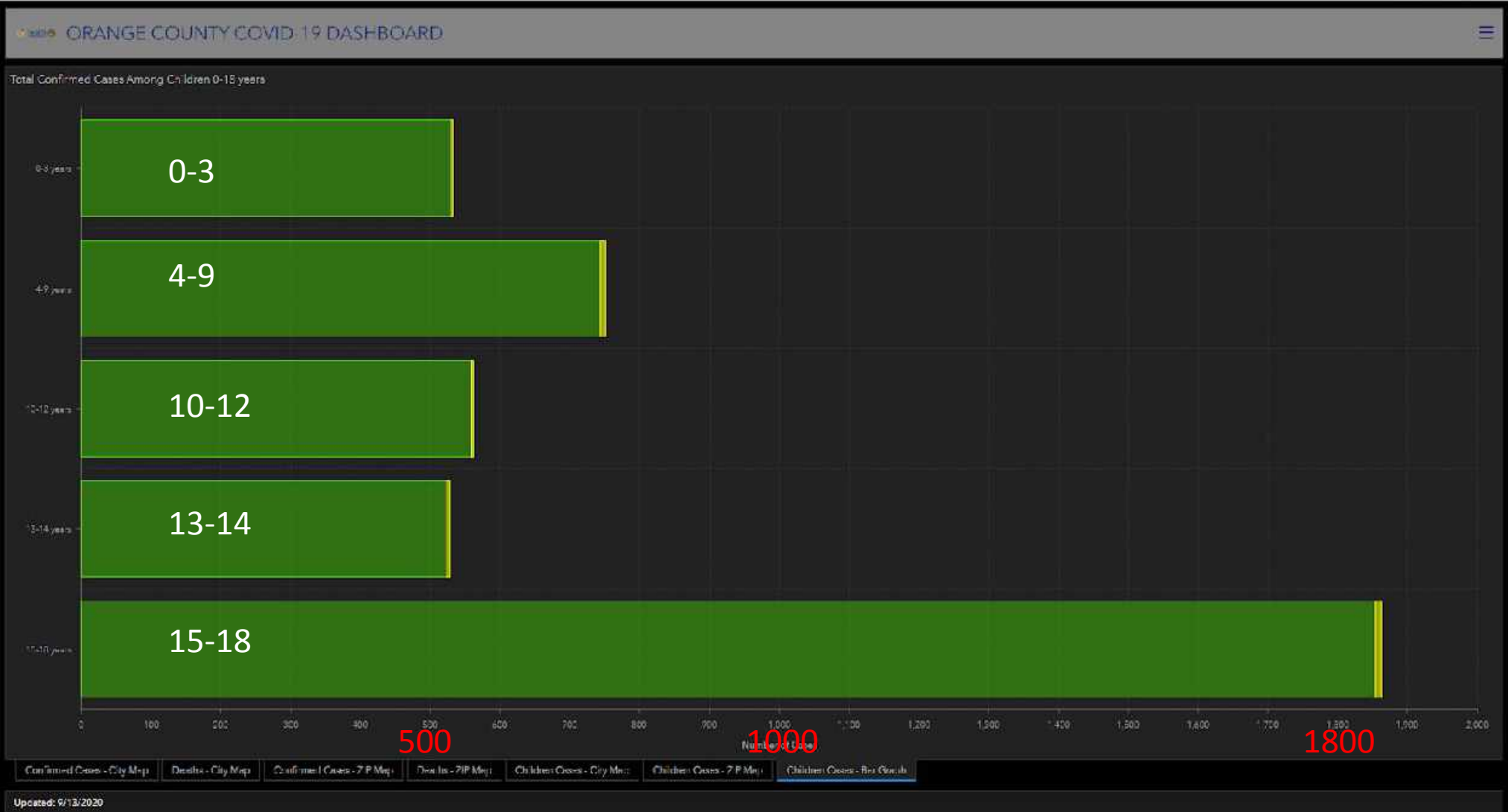
	Higher Risk <span style="font-size: 0.8em;">→</span> Lower Risk of Community Disease Transmission***			
	Widespread Tier 1	Substantial Tier 2	Moderate Tier 3	Minimal Tier 4
Measure				
Adjusted Case Rate for Tier Assignment** (Rate per 100,000 population* excluding prison cases^, 7 day average with 7 day lag)	>7	4-7  OC: 5.2	1-3.9	<1
Testing Positivity^ (Excluding prison cases^, 7 day average with 7 day lag)	>8%	5-8%  OC: 4.2%	2.4-9%	<2%

# Orange County COVID-19 Dashboard (9-14-20)

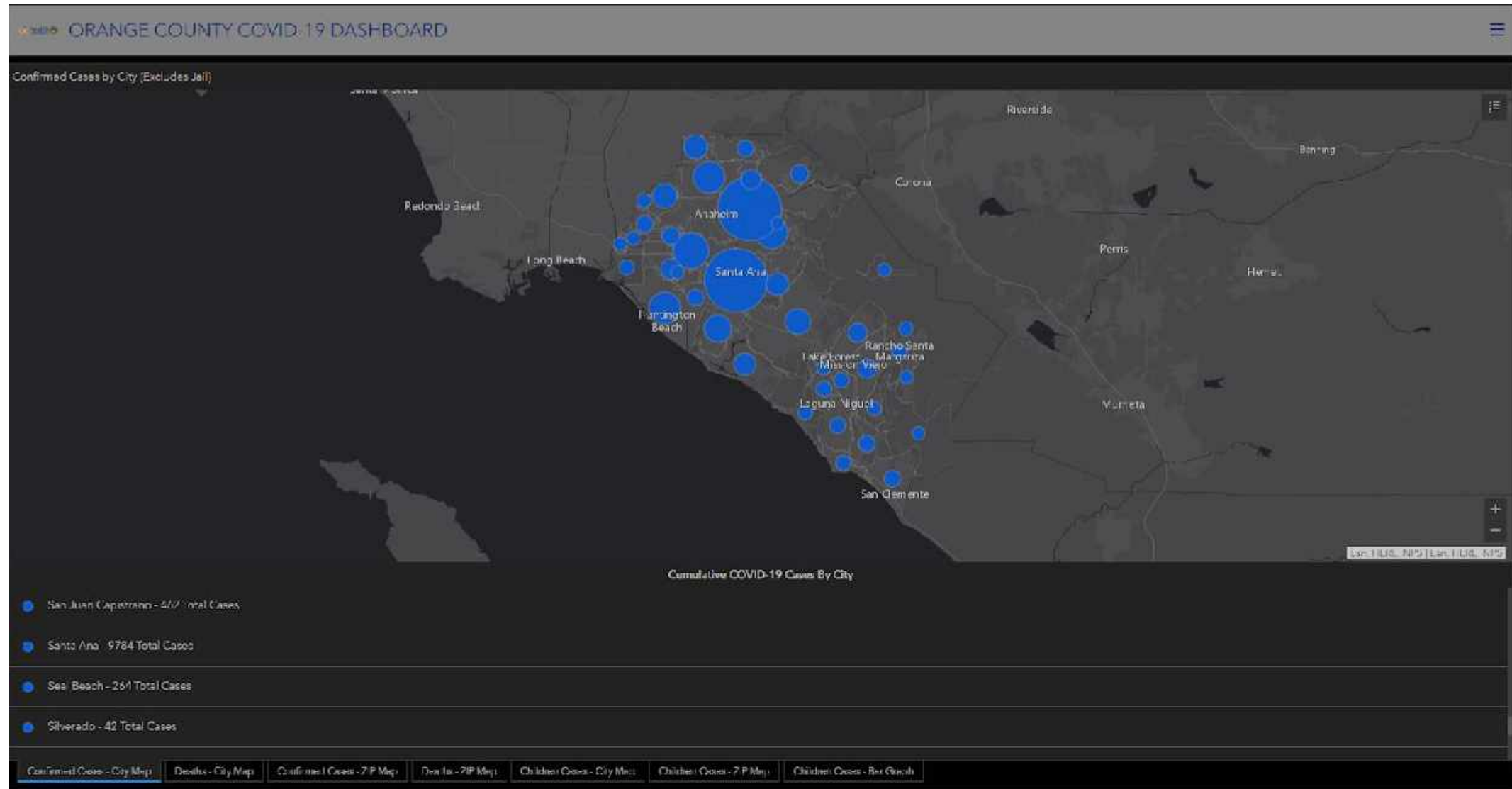




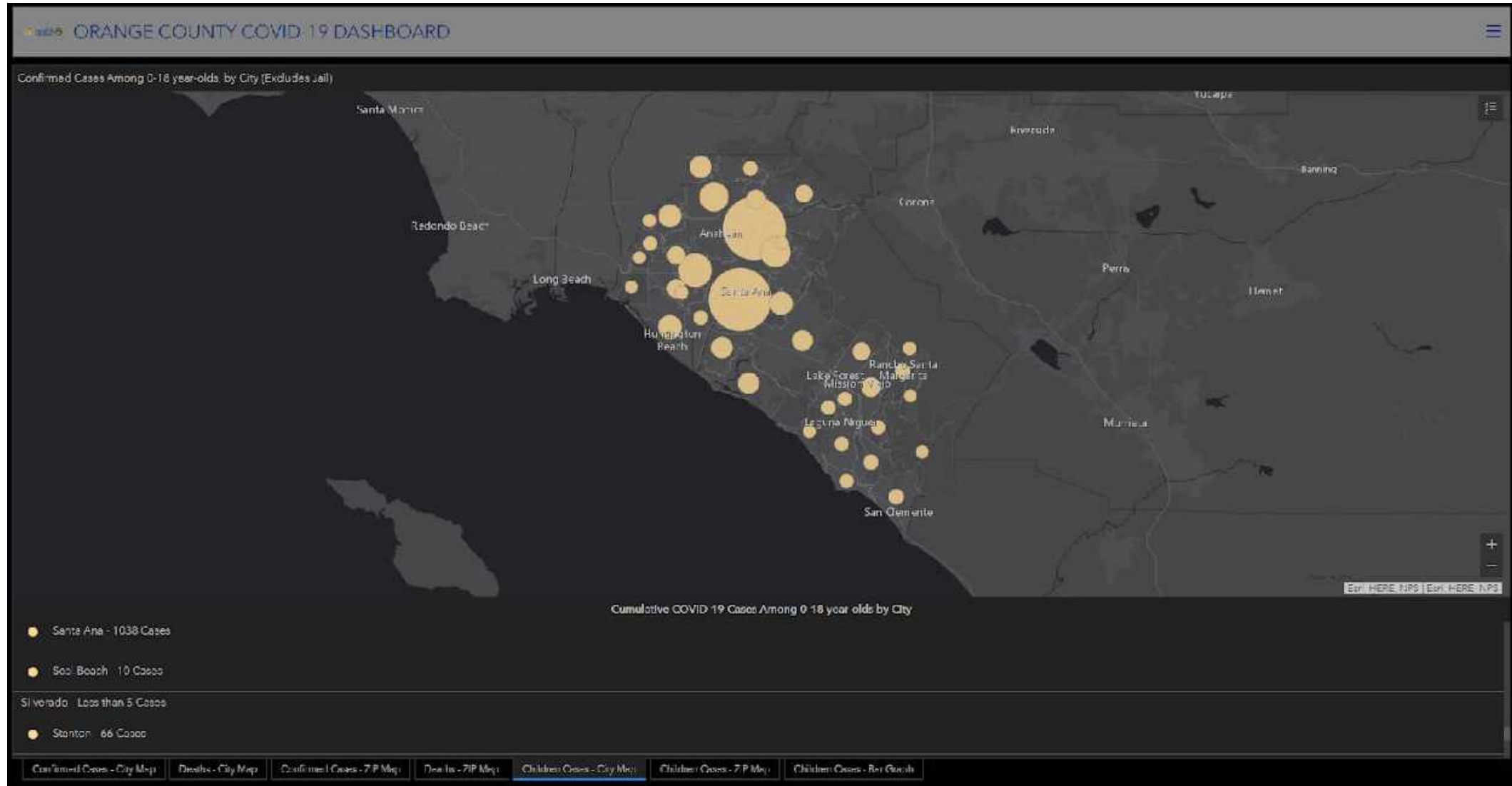
# Total OC COVID-19 Cases by Age Group



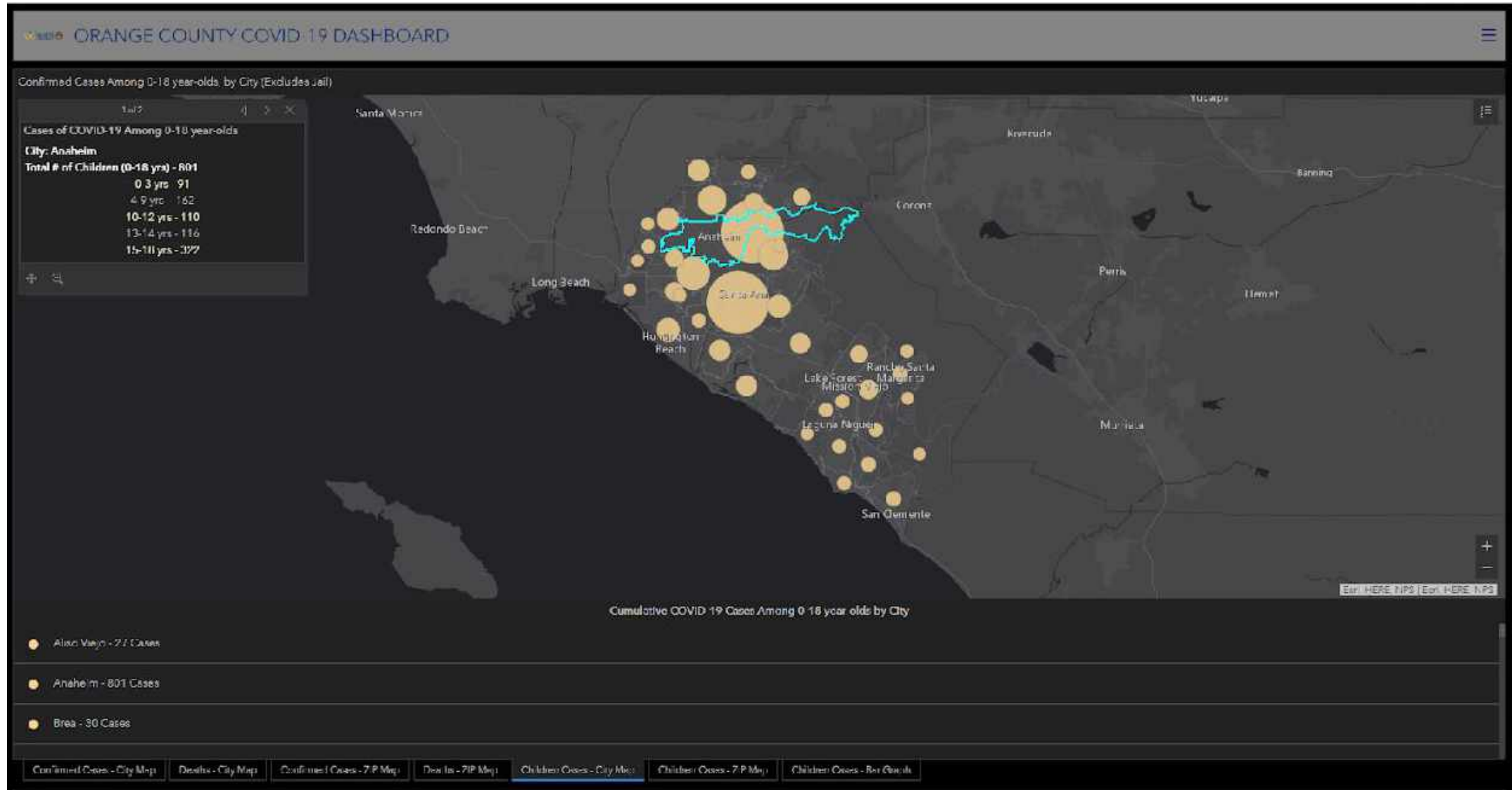
# OC COVID-19 cases City Map (all ages)



# OC COVID-19 cases City Map (children)



# OC COVID-19 cases City Map (children)

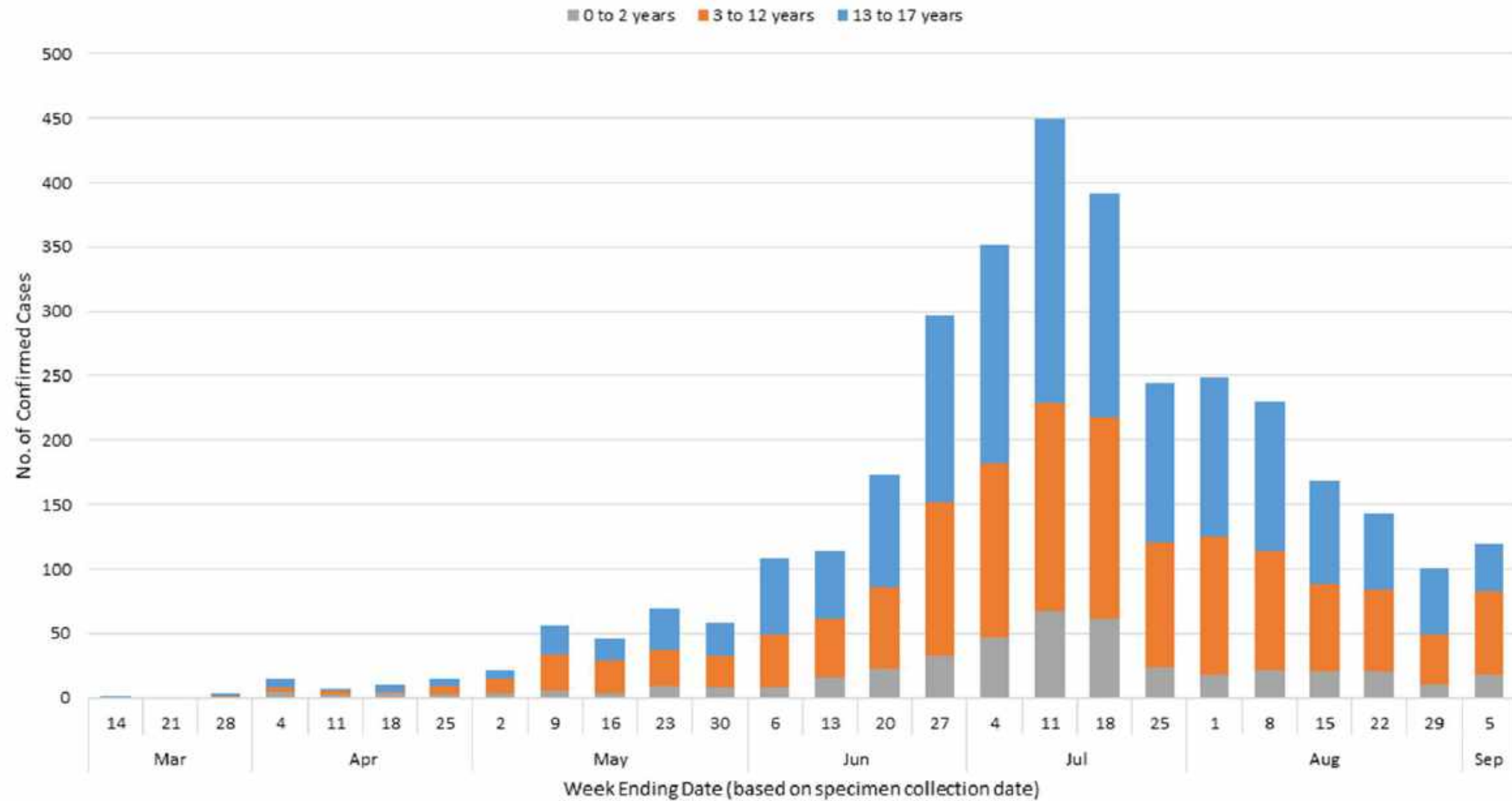




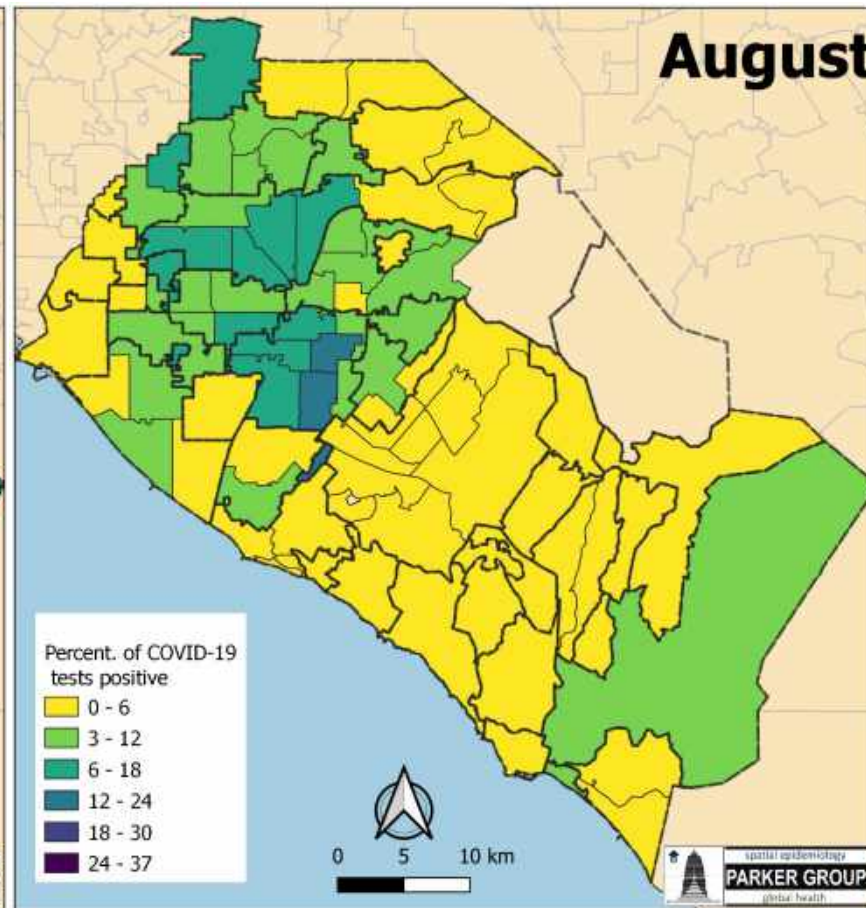
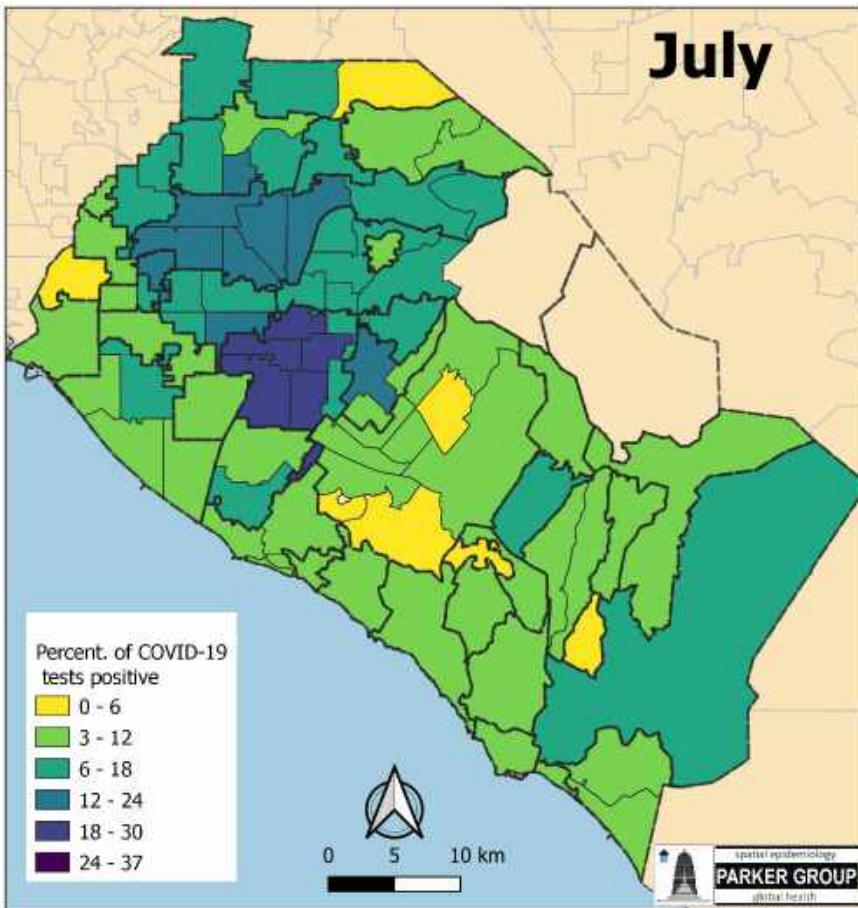
7-day Average Raw Counts of New Daily OC COVID Cases  
Specimen Collection Dates 3/18 - 9/8  
(excluding other and unknown race/ethnicity)



Pediatric COVID-19 Cases by Age Group and Disease Week.



# Monthly Change in % COVID Positivity by City



# Waivers vs. Countywide Reopening

- TK-6 waivers: 131/139 approved. Many reopened in August.
- CDPH guidance on specialized services in stable cohorts at schools (8/24)
- OC moved into the Red Tier (Tier 2) on September 8.
- Reopening of all schools permitted on September 22—out of Tier 1 for at least 14 days
  - No further waiver applications
  - Some schools/districts may choose to remain closed
- If data reverts to more restrictive tier for 2 consecutive weeks we revert back
  - Schools may remain open if OC reverts to Tier 1, but may be subject to additional public health measures, surveillance
  - Schools that have not reopened must wait until we reach Tier 2 again for 14 days



# COVID Case Reporting & Investigation

- Schools are required to notify HCA about COVID-19 cases in students or staff by the next business day via HRL (800) 564-8448 (option 2)
- HCA public health nurses and physicians
  - Assist with case investigations and contact tracing activities
  - Provide guidance regarding identifying individuals with high risk and low risk exposures
  - Provide recommendations about isolation of cases and quarantine of close contacts
  - Provide exposure-specific notification language to aid facilities/sites in their post-exposure outreach
  - Monitor case reports to identify and investigate disease clusters

# School/District Closures

- Cluster:  $\geq 3$  cases in a school/site
- HCA's messaging will indicate that we investigate "when 2 or more cases are identified in a school or workplace"
- School closure may be appropriate when there are multiple cases in multiple cohorts at a school or when at least 5 percent of the total number of teachers/student/staff are cases within a 14-day period, depending on the size and physical layout of the school.
- Superintendent should close a school district if 25% or more of schools in a district have closed due to COVID-19 within 14 days, and in consultation with the local public health department.

# HCA Web Resource Links

- <https://occovid19.ocalthinfo.com/>
  - <https://occovid19.ocalthinfo.com/covid-19-testing>
  - <https://occovid19.ocalthinfo.com/coronavirus-in-oc>
  - <https://coronavirus.egovoc.com/guidance-child-care-schools-and-institutions-higher-education>
  - <http://www.ocalthiertogether.org/tiles/index/display?alias=covidtoolkit>



---

# **AAP Chapter Chat**

# **Back to School Update**

**9/16/20**

**Dr. Michael Weiss, V.P.**

**Population Health CHOC Children's**



OC HEALTH CARE AGENCY - CHOC CHILDREN'S - UCI  
**ORANGE COUNTY COVID-19 SCHOOL  
CONSULTATION SERVICES**

For school administrators only, not for public dissemination.



**What is the Orange County COVID-19 School Consultation Services program?**

This program is a collaboration between the Orange County Health Care Agency (OCHCA), University of California, Irvine (UCI), and Children's Hospital Orange County (CHOC Children's). Our goal is to support a regional approach to school-related COVID-19 questions by providing recommendations and guidance, based upon the best information available from the Centers for Disease Control and Prevention, American Academy of Pediatrics, California Department of Public Health, and OCHCA, to all Orange County school districts, schools (public and private), and child care settings.

**What recommendation/guidance topics can we help provide?**

- Safe reopening of schools and childcare
- Safe practices to maintain opening of schools and childcare
- Provision of educational materials and virtual presentations for school/daycare staff
- Respond to inquiries from school/daycare staff on general COVID-19 related questions
- Provide timely communication regarding updated best practices and/or any changes in school recommendations
- Ability to provide virtual or appropriately social distanced presentations, with advance notice, on evenings or weekends, to school/daycare personnel
- Remote availability: Monday-Friday 8:00 am-6:00 pm

**What services are out of scope for this program?**

- Direct patient/clinical care
- Decisions on specific clinical cases
- Infection tracing/case investigations
- Decisions on school closures (ie open or don't open)
- Public comment or public facing engagements/presentations
- Adult patient clinical information or decision-making

Contact the OCHCA COVID Schools Response Team at (800) 564-8448 and select option 2 for assistance with COVID-19 case reporting, case investigation, and contact tracing.

**Who can call the COVID-19 Schools Consultation Services Line?**

- ✓ Orange County Public and Private K-12 Schools: Administrators, school nurses, teachers
- ✓ Orange County Childcare/Daycare Providers/Preschools: Administrators, health personnel, teachers

**Contact the Orange County COVID-19 School Consultation Services Line  
Call 1-844-GET-CHOC**

A pediatric nurse will triage your call:

- For an acute need to speak to a clinician, you will be routed to our physician or nurse practitioner on call, Monday - Friday 8:00 am to 6:00 pm
- For review of reopening plans or requests for education, we will connect you to our Project Liaison to assist with scheduling

9/1/2020

**UCI** University of California, Irvine

**CHOC** Children's

**OC health** CARE AGENCY



## CHOC-UCI-OCHCA Collaboration

- Open to school staff only
- M-F 8 am-6 pm provider availability
- Answer questions/provide guidance
- Education for staff/administrators
- School nurse resource
- Review re-opening plans
- Use of evidence-based recommendations
- NOT providing patient care
- NOT doing contact tracing
- NOT making opening decisions
- Staying out of politics

## Student Symptom Decision Tree

Screen all students for potential COVID-19 symptoms or exposure

### Low-risk: general symptoms



Fever ( $\geq 100.4^{\circ}\text{F}$ )



Sore throat



Congestion/runny nose



Headache



Nausea/vomiting/diarrhea



Fatigue/muscle or body aches

### High-risk: red flag symptoms



Cough



Difficulty breathing



Loss of taste/smell

### Exposure to COVID-19 positive person?

Close contact: less than 6 feet, 15 minutes or longer

**NO**

► 1 **low risk** symptom



Send home



Return to school 24 hrs after symptom resolution (without fever reducing medication)

►  $\geq 2$  **low risk** symptoms  
OR 1 **high risk** symptom



Send home



Evaluation by health care provider

1

Health care provider confirms alternative diagnosis for symptoms. A health care provider's note must be on file. SARS-CoV-2 PCR test not needed.



Return to school after 24 hrs without fever and symptoms improving

2

Negative SARS-CoV-2 PCR test.



Return to school after 24 hrs without fever and symptoms improving

3

Positive SARS-CoV-2 PCR test  
OR  
No provider visit or test.



Return to school only after 10 days since symptom onset and 24 hrs without fever. Quarantine close contacts of confirmed cases. If any questions, contact local health care provider.

**YES**



Stay home\*



Return to school after 14 days from last contact, unless symptoms develop. If symptoms develop, perform SARS-CoV-2 PCR test.

\*In consultation with local health care provider

This care pathway was designed to assist school personnel and is not intended to replace the clinician's judgment or establish a protocol for all patients with a particular condition. Diagnosis and treatment should be under the close supervision of a qualified health care provider. Guidance might change 09-12-20

## UCI-OCHCA-CHOC Collaboration

- Designed for real-time use by nurses or health aids
- Based on CDC, CDPH, and AAP guidelines

## Back to School Clearance



### COVID19 Return-to-School Guidance

Student's Name: \_\_\_\_\_ Grade: \_\_\_\_\_ DOB: \_\_\_\_\_

Date sent home from school or first day kept home from school: \_\_\_\_\_

Patient presents with shortness of breath, cough, rhinorrhea, nasal congestion, sore throat, fever, chills, body aches, nausea, vomiting, diarrhea, loss of taste or smell and/or uncharacteristic throbbing headache.

*Fever is defined as  $>100.4^{\circ}\text{F}$ . "Resolved" means the student has a temperature below that *WITHOUT* the use of medication. If fever was never present, the other guidelines must still be followed.*

*If testing is PENDING, complete the form after results are available. A student may not return to school while a test is pending.*

**Please select one:**

\_\_\_\_\_ Student found to have another source of symptoms; SARS-COV2 testing was NOT done; may return to school based on school's guidance.

\_\_\_\_\_ Student NOT found to have another source of symptoms; SARS-COV2 testing was not done; recommend the student not return to school until 24 hours after fever has resolved (if fever has been present or occurs) and for a MINIMUM of 10 days from the onset of symptoms.

\_\_\_\_\_ Student had a NEGATIVE test for SARS-COV2, as well as another source of symptoms; may return to school 24 hours after symptoms have resolved.

\_\_\_\_\_ Student had a NEGATIVE test for SARS-COV2 but considered still at risk; may not return to school until 24 hours after fever has resolved and other symptoms improve, with a MINIMUM of 10 days from the onset of symptoms.

\_\_\_\_\_ Student had a POSITIVE test for SARS-COV2; must stay home until 24 hours after fever has resolved and other symptoms improve, with a MINIMUM of 10 days from the onset of symptoms.

\_\_\_\_\_ Student is asymptomatic but had a POSITIVE test for SARS-COV2; must stay home for 10 days from the date of the test. If symptoms develop, the student must stay home until 24 hours after fever resolves and other symptoms improve, with a MINIMUM of 10 days from the date of the test.

\_\_\_\_\_ Student has a known close exposure to someone with COVID-19 (household contact and/or >15 minute contact at less than 6 feet) and must quarantine for 14 days from the date of the last exposure, regardless of test results.

Parent's Name: \_\_\_\_\_ Parent's Signature: \_\_\_\_\_ Date: \_\_\_\_\_

*Per HIPAA guidelines, this form is for patient/parent use, but may be shared with the school if desired.*

The **earliest** this patient may return to school is: \_\_\_\_\_

This statement is valid based on relevant information on the date below, but may change based on new symptoms, exposures, or results. The patient's family has been instructed to notify the office of any changes.

Doctor's Name: \_\_\_\_\_ Stamp: \_\_\_\_\_

Doctor's Signature: \_\_\_\_\_ Date: \_\_\_\_\_



Research Study: ***Academic and Community Partnerships in Orange County to Optimize a Safe School Restart During COVID-19 Pandemic***

WHAT: A research study to learn about how COVID-19 is transmitted among students and personnel at schools.

WHO: Students (ages 10-13) and school personnel at participating schools.

HOW: Participants will be asked to have a gentle nasal swab and optional blood draw done two times. Collections will happen on your school campus.

COMPENSATION: If you participate, you may receive up to \$100 in gift cards.



Interested? Contact Study Coordinators:

Kirsten Kasper: 714-509-4578, [kkasper@choc.org](mailto:kkasper@choc.org)

Jessica Ardo: 714-509-8946, [jardo@choc.org](mailto:jardo@choc.org)

Principal Investigator: Dr. Dan Cooper, MD

- This unique, first-of-its-kind study is beginning
- CHOC and UCI IRB approval is complete
- Four OC Schools
  - ✓ 2 schools in Santa Ana
  - ✓ 1 school that cares for special needs children
  - ✓ 1 private school



# Team



Dan Cooper, MD  
Pediatrics, Pulmonologist  
UC Irvine, CHOC  
Associate Vice Chancellor Research



Erlinda Ulloa, MD, MSc  
Pediatrics, Infectious Disease  
UC Irvine, CHOC



Diana Stephens, MBA  
Project Director | UC Irvine



Jessica Ardo, MSW, BA  
Clinical Research Coordinator | CHOC



Kirsten Kasper, BA  
Clinical Research Coordinator | CHOC

# DISCUSSION

**Dr. Michael Weiss, CHOC Children's**  
**Michelle DeHaven, RN, BSN, PHN, NCSN**  
**Dr. David Núñez, OC Health Care Agency**



# Become an AAP-OC Chapter Member

American Academy of Pediatrics  
DEDICATED TO THE HEALTH OF ALL CHILDREN™  
ORANGE COUNTY CHAPTER



## MEMBERSHIP APPLICATION

AMERICAN ACADEMY OF PEDIATRICS — ORANGE COUNTY CHAPTER (CALIFORNIA CHAPTER 4)

First Name: \_\_\_\_\_ Middle/Maiden: \_\_\_\_\_ Last Name: \_\_\_\_\_

☐ MD ☐ DO ☐ Other (Specify): \_\_\_\_\_ ☐ Male ☐ Female

Preferred Address & Phone ☐ Home – or – ☐ Office

\_\_\_\_\_

Institution/Organization Name (if applicable)

\_\_\_\_\_

Number/Street/Suite

\_\_\_\_\_

City/State/Zip or Postal Code/Country

\_\_\_\_\_

Phone: \_\_\_\_\_ Fax: \_\_\_\_\_

☐ Home ☐ Work ☐ Cell

\_\_\_\_\_

Email Address

\_\_\_\_\_

**Please indicate your training:**

☐ A) Primary Care Pediatrics ☐ B) Pediatric Subspecialty – Please indicate: \_\_\_\_\_

☐ C) Other: \_\_\_\_\_

**Categories of Chapter Membership: (Please Check ONE) (See below for descriptions)**

<input type="checkbox"/> Fellow/Specialty Fellow \$225	<input type="checkbox"/> Resident Fellow \$0
<input type="checkbox"/> Emeritus/Retired Fellow \$50	<input type="checkbox"/> National Affiliate \$225
<input type="checkbox"/> Associate Member \$225	<input type="checkbox"/> Physician/Dentist Chapter Affiliate \$225
<input type="checkbox"/> Candidate Member \$225	<input type="checkbox"/> Chapter Affiliate \$145
<input type="checkbox"/> Post Residency Training Member (First 2 Years After Residency) \$95	<input type="checkbox"/> Chapter Affiliate Student \$0

**Payment:**

☐ My check for \_\_\_\_\_ is enclosed – Check # \_\_\_\_\_

PLEASE MAKE YOUR CHECK PAYABLE TO: California Chapter 4, AAP

☐ I would like to include a donation of \_\_\_\_\_ to CA Chapter 4, AAP

☐ I will pay using a credit card: ☐ Visa ☐ Mastercard ☐ AMEX ☐ Discover

Amount \$: \_\_\_\_\_ • Cardholder Name: \_\_\_\_\_

Card Number: \_\_\_\_\_ • CVV: \_\_\_\_\_ • Exp. Date: \_\_\_\_\_

\* If you prefer to give credit card information over the phone, please call AAP-OC at (949) 752-2787

[www.aap-oc.org/membership](http://www.aap-oc.org/membership)

Support our Chapter

[www.aap-oc.org/support-us](http://www.aap-oc.org/support-us)

# Some Good News...



# Join Us this Fall

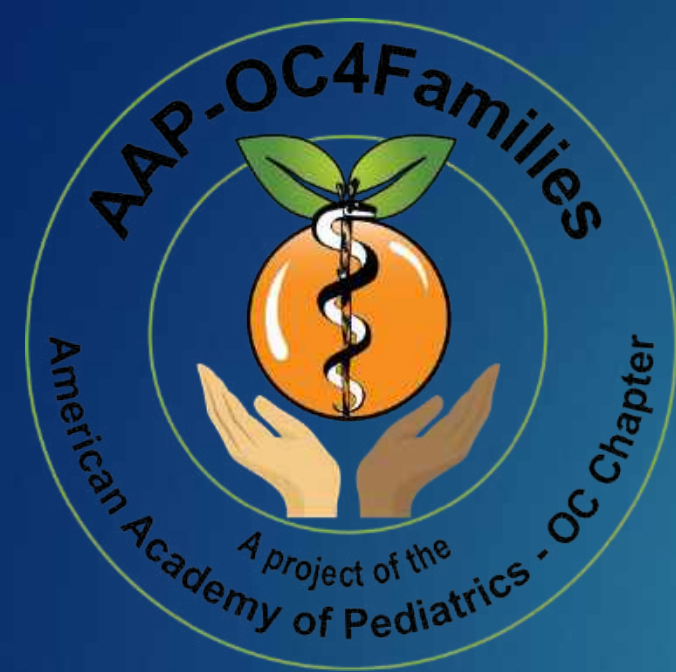
## CME Events:

- September 23, 2020      A Play Date for Active Play – Early Childhood Obesity Prevention Collaborative  
6:30PM – 8:00PM
- October 14      Influenza Vaccine Talk (Susan Hoffman, MD)  
6:00PM – 7:30PM
- October 24      Infant and Early Childhood Nutrition Conference  
8:00AM – 11:30AM
- November (TBD)      Non-viral Consequences of COVID-19  
6:00PM – 7:00PM

## MOC-4 Quality Improvement Project

ACEs Aware Peer-to-Peer Learning Program      October 2020 - June 2021





@AAPOC4Families



@AAPOCParaLasFamilias



# *Better Together!*

[www.aap-oc.org](http://www.aap-oc.org)



@ocaap



@AAPOCChapter4



@OCAAP