

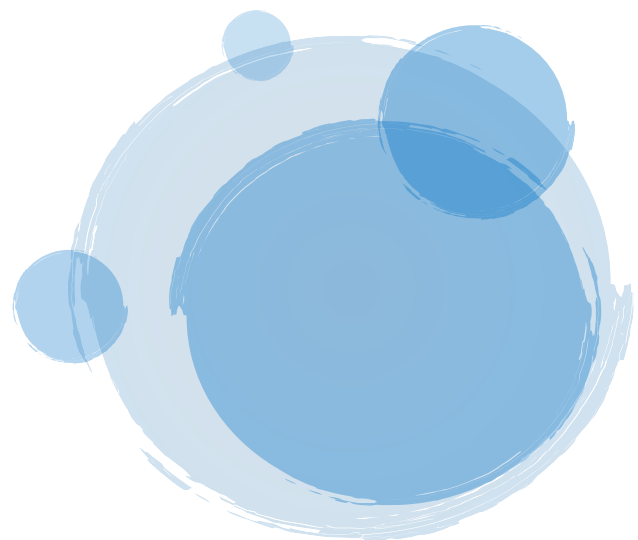


TRAUMA INFORMED CARE CONFERENCE

EXHIBITOR OVERVIEW

APRIL 5-6, 2019

SADDLEBACK CHURCH, ANAHEIM



EVENT SPONSORED BY:



ORGANIZATION NAME:

ILLUMINATION FOUNDATION

DESCRIPTION OF SERVICES:

Illumination Foundation provides housing and wraparound services for homeless individuals, families, and children. Our mission is to break and end the cycle of homelessness in Orange County.

AREAS SERVED:

We provide services for homeless individuals, families and, children primarily who have ties to the city of Anaheim. However, we have several programs that any individual or family in Orange County can participate in.

CONTACT INFORMATION



7855 Katella Ave Stanton,
CA 90680



949-273-0555



rwolfrum@ifhomeless.org

www.ifhomeless.org

POPULATIONS SERVED:

We have a strong focus on homeless families with children under 5. However, we work with families who have young children all the way to homeless senior adults.

**AREAS OF SPECIALIZATION FOR
ACES TREATMENT/ PREVENTION/ EDUCATION/ REFERRAL**

PHYSICAL ABUSE	X	SEXUAL ABUSE	
EMOTIONAL ABUSE	X	EMOTIONAL NEGLECT	X
PHYSICAL NEGLECT	X	SUBSTANCE MISUSE	X
MOTHER TREATED VIOLENTLY	X	PARENT SEPARATION/ DIVORCE	X
MENTAL ILLNESS	X	INCARCERATED HOUSEHOLD MEMBER	X

TRAUMA INFORMED CARE CONFERENCE
EXHIBITOR OVERVIEW

ORGANIZATION NAME:

MOMS ORANGE COUNTY

DESCRIPTION OF SERVICES:

MOMS Orange County surrounds vulnerable pregnant women with a circle of support, helping them to achieve a healthy pregnancy and deliver a healthy baby. Through monthly Home Visits and Health Education classes, mothers are empowered for positive and healthy self-care, babies are born healthy and reach their developmental milestones on time, fathers are prepared for a positive role in the family, and families gain resilience.

AREAS SERVED:

Home visitation is delivered throughout Orange County. Health education classes and support groups are held at MOMS Orange County in Santa Ana and rotate in high-need areas of Orange County at community sites.

POPULATIONS SERVED:

Low-income mothers, fathers, other family/caring adults, infants and toddlers from throughout Orange County.

AREAS OF SPECIALIZATION FOR ACES TREATMENT/ PREVENTION/ EDUCATION/ REFERRAL

PHYSICAL ABUSE	X	SEXUAL ABUSE	X
EMOTIONAL ABUSE	X	EMOTIONAL NEGLECT	X
PHYSICAL NEGLECT	X	SUBSTANCE MISUSE	X
MOTHER TREATED VIOLENTLY	X	PARENT SEPARATION/ DIVORCE	X
MENTAL ILLNESS	X	INCARCERATED HOUSEHOLD MEMBER	X

CONTACT INFORMATION



MOMS Orange County
1128 W. Santa Ana Blvd.
Santa Ana, CA 92703



714-972-2610



info@momsorangecounty.org

www.momsorangecounty.org

TRAUMA INFORMED CARE CONFERENCE
EXHIBITOR OVERVIEW

ORGANIZATION NAME:

OCAPICA

DESCRIPTION OF SERVICES:

Prevention and Early Intervention for the following services:

- Short Term Individual/Group Counseling
- Case Management Services
- Referrals and linkages to resources
- Educational and life skills workshops

AREAS SERVED:

North and South Orange County Areas including: Anaheim, Brea, Buena Park, Cypress, Fullerton, La Habra, La Palma, Los Alamitos, Placentia, Seal Beach, Stanton, Westminster, Yorba Linda, Aliso Viejo, Dana Point, Irvine, Laguna Beach, Laguna Hills, Laguna Niguel, Laguna Woods, Lake Forest, Mission Viejo, Newport Beach, Rancho Santa Margarita, San Clemente, San Juan Capistrano, Tustin.

POPULATIONS SERVED:

Individuals and families with barriers to mental health or case management services.

AREAS OF SPECIALIZATION FOR

ACES TREATMENT/ PREVENTION/ EDUCATION/ REFERRAL

PHYSICAL ABUSE	X	SEXUAL ABUSE	X
EMOTIONAL ABUSE	X	EMOTIONAL NEGLECT	X
PHYSICAL NEGLECT	X	SUBSTANCE MISUSE	X
MOTHER TREATED VIOLENTLY	X	PARENT SEPARATION/ DIVORCE	X
MENTAL ILLNESS	X	INCARCERATED HOUSEHOLD MEMBER	X

CONTACT INFORMATION



12912 Brookhurst Street
#400, Garden Grove CA
92840



714-636-8828



TRAUMA INFORMED CARE CONFERENCE
EXHIBITOR OVERVIEW

ORGANIZATION NAME:

THE CENTER FOR AUTISM AND NEURODEVELOPMENTAL DISORDERS

DESCRIPTION OF SERVICES:

The Center for Autism and Neurodevelopmental Disorders strives to provide help and hope for individuals and families living with an autism spectrum disorder and other neurodevelopmental disorders.

AREAS SERVED:

We serve families primarily in the Southern California geographical area but have several families who travel from as far away as Vietnam to receive services and therapies here at The Center for Autism.

CONTACT INFORMATION



949-267-0400



www.TheCenter4Autism.org

POPULATIONS SERVED:

We provide a wide range of clinical services designed to benefit families of children from birth to 22 years of age. In particular we are pleased to be able to provide excellent care for families who are covered by CalOptima insurance (Medicaid) and may otherwise be unable to secure high quality specialist care for their loved ones with autism and other neurodevelopmental disorders.

AREAS OF SPECIALIZATION FOR ACES TREATMENT/ PREVENTION/ EDUCATION/ REFERRAL

PHYSICAL ABUSE		SEXUAL ABUSE	
EMOTIONAL ABUSE		EMOTIONAL NEGLECT	
PHYSICAL NEGLECT		SUBSTANCE MISUSE	
MOTHER TREATED VIOLENTLY		PARENT SEPARATION/ DIVORCE	X
MENTAL ILLNESS	X	INCARCERATED HOUSEHOLD MEMBER	

TRAUMA INFORMED CARE CONFERENCE
EXHIBITOR OVERVIEW

ORGANIZATION NAME:

CHILD GUIDANCE CENTER

DESCRIPTION OF SERVICES:

Founded in 1967, Child Guidance Center (CGC) provides mental health services to children and youth ages 0-21 and their families who reside in Orange County. Our services include crisis intervention, individual, family, and group therapy for emotional and behavioral challenges, anxiety, depression, PTSD, ADHD, and more. In addition, CGC offers training opportunities and a breadth of evidence-based practices which include: Parent-Child Interaction Therapy, Trauma-Focused Cognitive Behavioral Therapy, PEERS Social Skills groups, EMDR, and others. Child Guidance Center also collaborates with four (4) nonprofit partner agencies to form the Strong Families, Strong Children Program which provides mental health and supportive services to meet the unique needs of veteran and military families. We accept Medi-Cal and other insurances and welcome any self-referrals, referrals from schools, pediatricians, children and family services, and community partners.

CONTACT INFORMATION



525 N Cabrillo Park Drive, Suite 300,
Santa Ana, CA 92701

680 Langsdorf Drive, Suite 200,
Fullerton, CA 92831

6301 Beach Blvd, Suite 245, Buena
Park, CA 90621

3551 Camino Mira Costa, Suite T, San
Clemente, CA 92672



info@cgcinc.org

www.childguidancecenter.com

www.pcitmethod.com

www.ocstrongfamilies.org

AREAS SERVED:

Services are provided at our four (4) main clinics (Buena Park, Fullerton, San Clemente, Santa Ana), at four (4) Family Resource Centers (Anaheim, Garden Grove, Santa Ana), at-home, on school campuses, and at other community sites.

POPULATIONS SERVED:

Services are provided to children and youth ages 0-21 and their families who reside in Orange County. Our military program, Strong Families Strong Children, provides counseling services to children with a military connection and free resources to active/veteran personnel and their spouses.

AREAS OF SPECIALIZATION FOR ACES TREATMENT/ PREVENTION/ EDUCATION

PHYSICAL ABUSE	X	SEXUAL ABUSE	X
EMOTIONAL ABUSE	X	EMOTIONAL NEGLECT	X
PHYSICAL NEGLECT	X	SUBSTANCE MISUSE	X
MOTHER TREATED VIOLENTLY	X	PARENT SEPARATION/ DIVORCE	X
MENTAL ILLNESS	X	INCARCERATED HOUSEHOLD MEMBER	X

TRAUMA INFORMED CARE CONFERENCE
EXHIBITOR OVERVIEW

ORGANIZATION NAME:

HELP ME GROW ORANGE COUNTY

DESCRIPTION OF SERVICES:

Help Me Grow connects children and their families to developmental services to enhance the development, behavior and learning of children birth through eight years.

AREAS SERVED:

Orange County

CONTACT INFORMATION



POPULATIONS SERVED:

Children ages 0-8 years old who live in Orange County.

AREAS OF SPECIALIZATION FOR ACES TREATMENT/ PREVENTION/ EDUCATION/ REFERRAL

PHYSICAL ABUSE		SEXUAL ABUSE	
EMOTIONAL ABUSE	X	EMOTIONAL NEGLECT	X
PHYSICAL NEGLECT		SUBSTANCE MISUSE	
MOTHER TREATED VIOLENTLY		PARENT SEPARATION/ DIVORCE	X
MENTAL ILLNESS	X	INCARCERATED HOUSEHOLD MEMBER	

TRAUMA INFORMED CARE CONFERENCE
EXHIBITOR OVERVIEW

ORGANIZATION NAME:

PROJECT YOUTH OCBF

DESCRIPTION OF SERVICES:

Project Youth OCBF (Orange County Bar Foundation) is a 501(c)(3) nonprofit organization committed to keeping at-risk youth in school, healthy and drug-free through education, counseling, mentoring, and family strengthening. The programs of Project Youth OCBF empower youth and families to make positive choices, building the foundation for a lifetime of opportunity and success.

Project Youth has provided thousands of Orange County juveniles and their families with the necessary skills to deter delinquent activity, set goals, and plan for positive, healthy, and productive lives free of crime. Project Youth services include substance abuse prevention, health education, higher education mentoring, and diversion, in both English and Spanish. Numerous programs are specifically designed and implemented to be gender specific and all programs are culturally appropriate and sensitive for the target population.

CONTACT INFORMATION



1605 E. 17th Street
Santa Ana, CA 92704



www.projectyouthocbf.org

AREAS SERVED:

Diversion programs serve all of Orange County; Health Programs & Academic/Career Programs serve only Santa Ana.

POPULATIONS SERVED:

12-18 youth and their families

**AREAS OF SPECIALIZATION FOR
ACES TREATMENT/ PREVENTION/ EDUCATION/ REFERRAL**

PHYSICAL ABUSE		SEXUAL ABUSE	
EMOTIONAL ABUSE		EMOTIONAL NEGLECT	
PHYSICAL NEGLECT		SUBSTANCE MISUSE	X
MOTHER TREATED VIOLENTLY		PARENT SEPARATION/ DIVORCE	X
MENTAL ILLNESS		INCARCERATED HOUSEHOLD MEMBER	X

TRAUMA INFORMED CARE CONFERENCE
EXHIBITOR OVERVIEW

ORGANIZATION NAME:

SADDLEBACK CHURCH

DESCRIPTION OF SERVICES:

Trauma-Informed training for children and teens that includes ACEs study and TBRI® (Trust-Based Relational Intervention) from the Karyn Purvis Institute of Child Development at Texas Christian University.

AREAS SERVED:

We serve all of Orange County.

CONTACT INFORMATION



1 Saddleback Pkwy
Lake Forest, CA 92630



(949) 609-8034



maxm@saddleback.com

www.saddleback.com

POPULATIONS SERVED:

Families involved with adoption and foster care.

AREAS OF SPECIALIZATION FOR ACES TREATMENT/ PREVENTION/ EDUCATION/ REFERRAL

PHYSICAL ABUSE	X	SEXUAL ABUSE	X
EMOTIONAL ABUSE	X	EMOTIONAL NEGLECT	X
PHYSICAL NEGLECT	X	SUBSTANCE MISUSE	X
MOTHER TREATED VIOLENTLY	X	PARENT SEPARATION/ DIVORCE	X
MENTAL ILLNESS	X	INCARCERATED HOUSEHOLD MEMBER	X

TRAUMA INFORMED CARE CONFERENCE
EXHIBITOR OVERVIEW

ORGANIZATION NAME:

SENECA FAMILY OF AGENCIES

DESCRIPTION OF SERVICES:

Our outpatient mental health clinic serves youth 0-21 with full scope Medi-cal. All clients receive individual and family therapy and case management services. Ancillary services include - group therapy, med support, psych testing, TBS, and equine therapy.

AREAS SERVED:

Orange County - our clinics are located in Anaheim, Santa Ana, and Lake Forest

CONTACT INFORMATION



1801 Park Court Place #H
Santa Ana, CA 92701



714-957-1004



www.senecafoa.org

POPULATIONS SERVED:

Youth ages 0-21 with full scope Medi-Cal. We specialize in the permanency population.

**AREAS OF SPECIALIZATION FOR
ACES TREATMENT/ PREVENTION/ EDUCATION/ REFERRAL**

PHYSICAL ABUSE	X	SEXUAL ABUSE	X
EMOTIONAL ABUSE	X	EMOTIONAL NEGLECT	X
PHYSICAL NEGLECT	X	SUBSTANCE MISUSE	X
MOTHER TREATED VIOLENTLY		PARENT SEPARATION/ DIVORCE	X
MENTAL ILLNESS	X	INCARCERATED HOUSEHOLD MEMBER	X

TRAUMA INFORMED CARE CONFERENCE
EXHIBITOR OVERVIEW

ORGANIZATION NAME:

UCI BROAD LAB

DESCRIPTION OF SERVICES:

We are recruiting youth for 3 NIH-funded studies of adolescent mental & physical health and development. Participants are compensated for their time and effort, as well as mileage to/from study visits. Our Brain Development Study aims to learn how depression manifests differently in teens with and without a history of abuse in childhood. Teens receive a free comprehensive psychiatric diagnostic assessment and neuropsychiatric testing and these results can be provided to the child's care team upon participant request (we can also provide referrals for those who may benefit from additional evaluation and treatment). Teens also participate in an MRI scan (no medications or contrast/dyes) and receive some pictures of their brain as a keepsake!

CONTACT INFORMATION



(949) 445-1232



broadlab@uci.edu

<https://sites.uci.edu/broad/>

AREAS SERVED:

Southern California including Orange, Los Angeles, Riverside, San Bernardino, and San Diego counties

POPULATIONS SERVED:

Youth ages 11 - 17

**AREAS OF SPECIALIZATION FOR
ACES TREATMENT/ PREVENTION/ EDUCATION/ REFERRAL**

PHYSICAL ABUSE		SEXUAL ABUSE	
EMOTIONAL ABUSE		EMOTIONAL NEGLECT	
PHYSICAL NEGLECT		SUBSTANCE MISUSE	
MOTHER TREATED VIOLENTLY		PARENT SEPARATION/ DIVORCE	
MENTAL ILLNESS		INCARCERATED HOUSEHOLD MEMBER	

**TRAUMA INFORMED CARE CONFERENCE
EXHIBITOR OVERVIEW**

ORGANIZATION NAME:

WESTERN YOUTH SERVICES – OUTREACH AND ENAGAGEMENT

DESCRIPTION OF SERVICES:

Through our outreach and engagement initiatives, WYS identifies those who have fallen through the cracks and are not yet receiving care. We provide individual support and case management in homes, schools and other public places, ensuring that services are accessible to those who need them.

Our holistic approach focuses on building protective factors in children, youth, and families by offering services that feel like support and not “service” in the form of peer support groups, educational workshops, individual support and case management. Our goal is to reduce risk factors so that children, youth, and families will engage in positive and thriving behaviors, leading to a more empowered and connected community.

AREAS SERVED:

We serve all of North Orange County.

POPULATIONS SERVED:

We focus on those individuals that are under served and non-served in the community

AREAS OF SPECIALIZATION FOR
ACES TREATMENT/ PREVENTION/ EDUCATION/ REFERRAL

PHYSICAL ABUSE	X	SEXUAL ABUSE	X
EMOTIONAL ABUSE	X	EMOTIONAL NEGLECT	X
PHYSICAL NEGLECT	X	SUBSTANCE MISUSE	X
MOTHER TREATED VIOLENTLY	X	PARENT SEPARATION/ DIVORCE	X
MENTAL ILLNESS	X	INCARCERATED HOUSEHOLD MEMBER	X

CONTACT INFORMATION



131 W Midway Drive
Anaheim CA
92805



714-517-7107



<http://www.westernyouthservices.org>

TRAUMA INFORMED CARE CONFERENCE
EXHIBITOR OVERVIEW

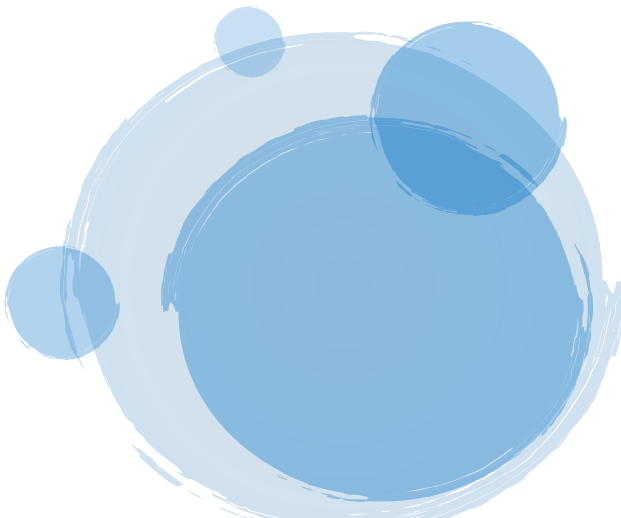


TRAUMA INFORMED CARE CONFERENCE | EXHIBITOR OVERVIEW

APRIL 5-6, 2019

SADDLEBACK CHURCH, ANAHEIM

NOTES



EVENT SPONSORED BY:

